

ENGLISH
TABLE
TENNIS
ASSOCIATION



TABLE TENNIS

OFFICIAL HANDBOOK Part II—1966/67
Cumulative Supplement to Part I published 1964/65

6

5

4

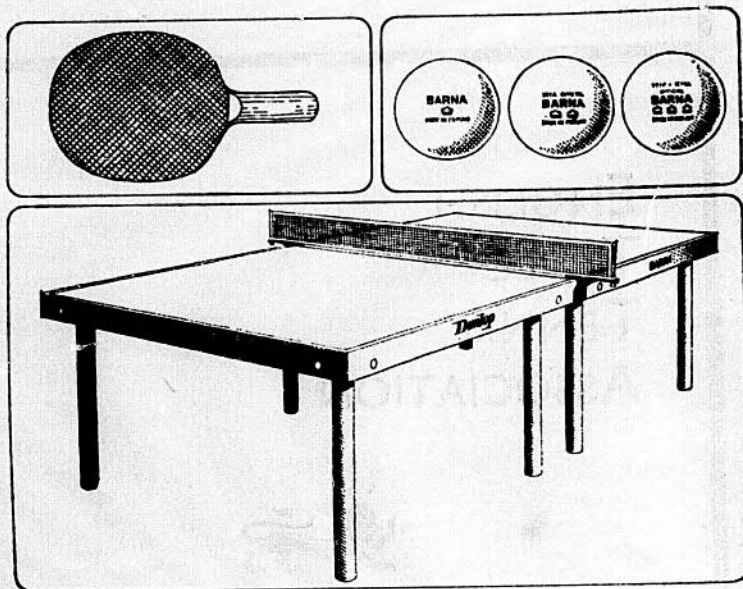
3

2

1

0

Standard Height of Net 6"



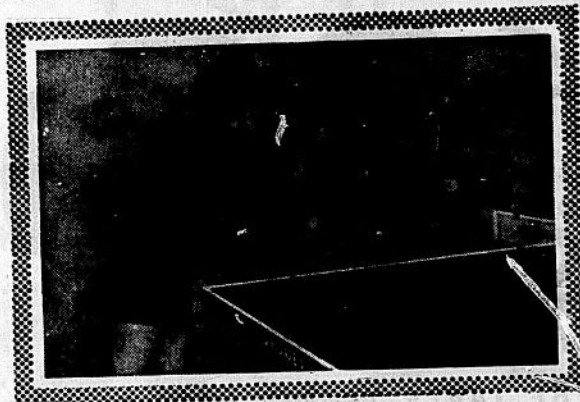
Dunlop Barna championship tables. Three Crown balls, nets and posts make up the finest table tennis equipment in the world.

YOU'LL DO BETTER WITH

SS/TT8

Dunlop

THE WORLD'S FASTEST TABLE



AND BATS TO WIN WORLD TITLES

by

JAQUES

to the design of British champions

MARY SHANNON-WRIGHT

DENIS NEALE

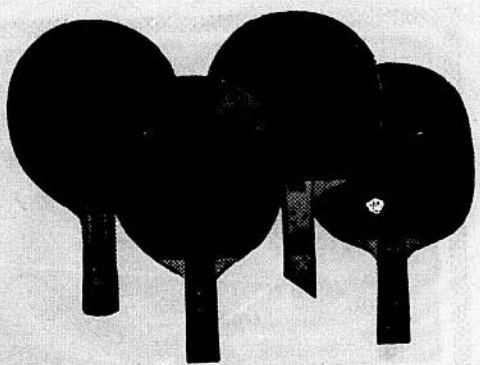
BRIAN WRIGHT

Illustrated catalogue of
the complete range of
JAQUES T.T. EQUIPMENT
free on request from

JOHN JAQUES & SON LTD.
Thornton Heath • Surrey



STIGA



**THE TABLE TENNIS BATS TO-DAY
USED BY ALL THE LEADING PLAYERS**

These World-famous Stiga bats have been developed in close co-operation with many European Champions. They are made of special plywood — guaranteed warp-proof and are faced with the new Stiga Yasaka soft and backside rubber. Exclusively imported into U.K. by Mitre Sports.

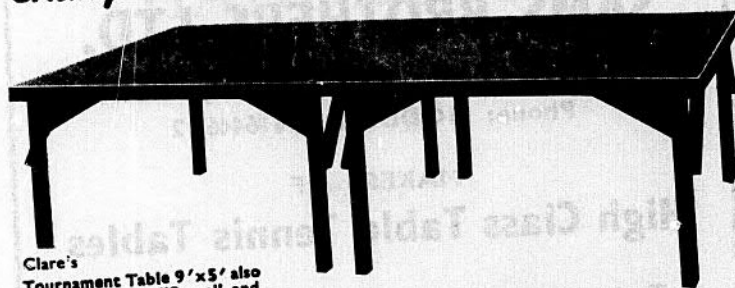
NOW BEING USED BY MOST CONTINENTAL CHAMPIONS

RETAIL PRICES FROM 31/3 TO 43/- EACH. OBTAINABLE FROM LEADING SPORTS DEALERS. Do not be put off with a substitute. If any difficulty in obtaining write to



MITRE SPORTS • HUDDERSFIELD

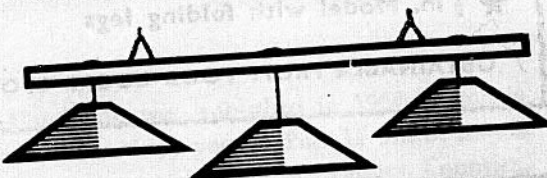
Champion make **TABLES**



Clare's
Tournament Table 9' x 5' also
Match Tables by "Barna" and
"Jaques"

Champion make **LIGHTING**

Clare's special Light-
ing Fitting 11' bar
with 3 lamp-holders
wired in parallel and
ready for use on
chains or pulleys —
plug in fitting, also
Round Millboard
shades and wireshade
frames.



Champion make **BATS**

Huge range of all the famous makes
e.g. "Terry" and Autographed bats.

SEND FOR CATALOGUE & PRICE LISTS

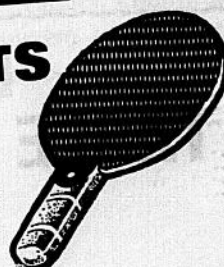


TABLE TENNIS PAINT
Dark Green, non-reflecting. Specially formu-
lated and manufactured for Tables. Quart tin
15/- (Post and Packing 2/6 extra.)

E. A. CLARE & SON
23/27 St. Anne Street, Liverpool, 3.
051 North 1336/7

Thos. PADMORE & SONS LTD.
8/12 Cheshire Street, Birmingham, 6.
021 Aston 4551/2

THURSTON & CO. LTD.
1/1a Sharples Hall St., London N.W.1.
01 Juniper 0088/9

Clare
of LIVERPOOL
Padmore
of BIRMINGHAM
Thurston
of LONDON

SAMS BROTHERS LTD.

CONDUIT LANE, HODDESDON, HERTS

Phone: HODDESDON 64461/2

MAKERS OF

High Class Table Tennis Tables

- ★ Tournament Heavy Duty 1' Norm £52 10 0
- ★ Tournament Club Model 1' Norm £45 0 0
- ★ ½ in. Model with folding legs £29 0 0

OBTAINABLE FROM YOUR LOCAL SPORTS SHOP

EDWARDS TABLE TENNIS NETS



**MANUFACTURED BY
BRIDPORT-GUNDRY LTD.
BRIDPORT, DORSET**

Telephone: Bridport 2381

Telegrams: Netting, Bridport

OBTAINABLE THROUGH ANY SPORTS RETAILER

HANDBOOK

Part II

1966/67

Part I of the Handbook was published in 1964-65 and is intended to be in use for three years. Part II will be issued each year and will include current details of Leagues, Counties, Tournaments, etc. together with a cumulative supplement containing certain amendments to Part I information.

Published by
English Table Tennis Association
26/29 Park Crescent, London, W.1.
Telephone: LAngham 6312

Printed by
Mark C. Brown & Son Ltd.
Baker Street, Hull.

ENGLISH TABLE TENNIS ASSOCIATION

Honorary Life Members

T. Blunn	F. G. Mannoch
C. J. Clemett	Hon. I. G. S. Montagu
G. W. Decker	E. Reay
I. C. Eyles	N. K. Reeve
M. Goldstein	A. K. Vint O.B.E.
G. James	E. G. White
C. Jaschke	L. S. Woollard

Vice Presidents

W. G. Allen	J. A. Leach, M.B.E.
F. A. Amies	K. Mackenzie
G. V. Barna	J. P. Mulcahy
H. M. Bunbury	D. W. Poupard
Mrs. D. L. Bunbury	D. S. Purr
E. F. Christopher	J. Siddron
T. A. Harrison	A. W. C. Simons
A. A. Haydon	Miss A. Stevens
R. C. Hurford	J. Thompson
C. Kichenside	R. Williams

Chairman

I. C. Eyles
140 Allison Road, Brislington, Bristol 4
Bristol 78652 (H)

Honorary Treasurer

T. Blunn
43 Headlands Drive, Hessle, East Yorkshire
Hull 642319 (H)

Honorary International Secretary

C. Jaschke
'Casa Mia,' Church Road, Footscray, Sidcup, Kent.
Footscray 5845 (H).

Organising Secretary

D. R. Tremayne
Room 323, 26/29 Park Crescent, London W.1.
LANGham 6312 (O)

Honorary Assistant Secretary

H. Walker
118 Avon Court, Avon Road, Cranham
Upminster 4031 (H)

Honorary Minute Secretary

A. W. Shipley, 17 Carisbrooke Road, Bromley, Kent
Ravensbrooke 7959 (H)

Auditors

Messrs. Spain Bros & Co., Chartered Accountants
London and Hastings

Bankers

Lloyds Bank Ltd.
Silver Street, Hull

MEMBERS OF THE NATIONAL COUNCIL

Bedfordshire	P. E. Harmer, 84 Brooklands Drive, Leighton Buzzard, Bedfordshire.
Berkshire	A. M. Lijinsky, 9 Duncan Road, Woodley, Reading, Berkshire. Reading 62913 (H).
Buckinghamshire	L. Thompson, "Auchmead," The Avenue, Sunnymeads, Wraybury, Bucks. Wraybury 2526 (H).
Cheshire	J. Kennerley, 31 Townsend Road, Lostock Graham, Northwich, Cheshire.
Cornwall	No Councillor Appointed.
Cumberland	G. Yates, 43 Knowsley Road, Smithills, Bolton, Lancs. Bolton 42223 (H).
Derbyshire	M. Allsop, 424 Kedleston Road, Allestree, Derby.
Devon	Mrs. F. Jarvis, 6 Linden Terrace, Gwyn Road, St. Judes, Plymouth, Devon.
Dorset	D. J. Meech, 339 Dorchester Road, Weymouth, Dorset.
Durham	E. Reay, 7 Forfar Street, Fulwell, Sunderland, Durham. Sunderland 57818 (H).
Essex	H. Walker, 118 Avon Court, Avon Road, Cranham, Upminster, Essex. Upminster 4031 (H).
Gloucestershire	L. C. T. Davis, 31 Old Church Road, Clevedon, Somerset. Clevedon 3715 (H).
Hampshire	M. S. Greatrex, 38 Cecil Avenue, Shirley, Southampton Southampton 76286 (H).
Hertfordshire	D. Game, 30 Railway Street, Hertford, Herts. Hertford 4419 (H).
Huntingdonshire	No Councillor Appointed.
Kent	C. Jaschke, "Casa Mia," Church Road, Footscray, Sidcup, Kent. Footscray 5845 (H).
Lancashire	G. H. T. Fackrell, 11 Halton Road, Great Sankey, Warrington, Lancs. Penketh 3696 (H).
Leicestershire	P. Reid, 47 New Fields Avenue, Braunstone, Leicester. Leicester 823242 (O).
Lincolnshire	K. W. Dewar, 133 Eastgate, Louth, Lincs. Louth 806 (H).
Middlesex	L. Hoffman, 33 Grove Avenue, Muswell Hill, 6.10. SHOReditch 7391 (O).
Norfolk	E. J. Fairhead, 11 Brabazon Road, Norwich, Norfolk, Norwich 46758 (H). Norwich 24063 (O).
Northamptonshire	No County Association.
Northumberland	D. M. Robson, 3 Houxty Road, South Wallfield, Whitley Bay, Northumberland. Shiremoor 383. (H).
Cambridgeshire/ Isle of Ely	W. J. Rogerson, 38 Green End Road, Cambridge. Cambridge 52832 (H). Cambridge 48405 (O).

Nottinghamshire	E. Taylor, 17a, Herbert Road, New Basford, Nottingham Nottingham 63543 (H).
Oxfordshire	A. J. Hobday, 2 South Bar, Banbury, Oxon. Banbury 3749 (H).
Shropshire	No County Association.
Somerset	A. Richens, No. 1 Flat, "Malvernhurst," 72 Berrow Road, Burnham-on-Sea, Somerset.
Staffordshire	M. E. Scott, "Deep Meadow," Long Common, Claverley, Nr. Wolverhampton, Staffs. Claverley 303 (H).
Suffolk	D. J. Barrett, 14 Sidegate Lane West, Ipswich, Suffolk.
Surrey	C. J. Clemett, 17a Leigh Road, Havant, Hants. Havant 4636 (H) Portsmouth 62271. Ext. 107 (O).
Sussex	K. Watts, 6 Windsor Road, St. Leonards-on-Sea, Sussex.
Warwickshire	M. Goldstein, 415 Mosley Road, Birmingham 12. Calthorpe 2739 (H).
Wiltshire	A. D. Ward, 26 Attwood Road, Salisbury, Wilts.
Worcestershire	I. R. Crickmer, 12 Cypress Street, Barbourne, Worcs.
Yorkshire	W. Mitton, 16 The Whins, Newby, Scarborough, Yorks. Scalby 202 (H).

KAYE · WARD *offer*

This book by Ken Stanley

TABLE TENNIS—A NEW APPROACH

An official ETTA coach (he was playing for England in the world championships at 16) this author gives full information on the game. 7½ x 5 inches., 112 pages, 9 half-tones and 50 drawings. 11s. 6d.

Two books by Johnny Leach

TABLE TENNIS COMPLETE

The most comprehensive work on table tennis ever produced. 8½ x 5½ inches, 192 pages, 263 action photographs. 22s. 6d.

TABLE TENNIS MY WAY

The world champion who represented England more than 150 times gives clear, concise instructions on each stroke. 8½ x 5½ inches, 48 pages, "flick" action drawings. Cased 5s. Limp 2s. 6d.

194-200 BISHOPGATE, LONDON, EC2

NATIONAL COUNCIL APPOINTMENTS

MANAGEMENT COMMITTEE

Officers

I. C. Eyles N. K. Reeve T. Blunn

Elected Members

M. Goldstein C. Jaschke E. Reay K. Watts

Press Officer N. K. Reeve, 8 Thornton Grove, Hatch End, Middlesex. HATch End 1470 (H).

Northern-Liaison Press Officer G. R. Yates, 43 Knowsley Road, Smithills, Bolton, Lancs. Bolton 42223 (H).

Director of Coaching J. H. Carrington, 24 Worcester Gardens, Ilford, Essex. VALentine 5838 (H).

International Secretary C. Jaschke, 'Casa Mia,' Church Road, Footscray, Sidcup, Kent. FOOTscray 5845 (H).

Assistant to the Treasurer G. T. H. Fackrell, 11 Halton Road, Great Sankey, Warrington, Lancs. Penketh 3696

Sub-Committees elected Season 1966/67

County Boundaries—K. Watts (Chairman), C. Clemett (Hon. Secretary), K. W. Dewar, H. Walker.

Coaching and Schools—C. Jaschke (Chairman), J. Carrington (Hon. Secretary and Director of Coaching), S. Frohlick, P. Reid, M. E. Scott, G. Steggall, L. Thompson, P. Simpson (Staff Coach).

English Championships—C. Jaschke (Organiser).

Handbook—T. Blunn, W. Mitton.

Master Points Scheme & Fund Raising Scheme—T. Blunn (Chairman), W. Mitton (Administrator), Mrs. B. Mitton (Secretary).

National Team Competitions—M. Goldstein (Chairman), L. C. T. Davis (Hon. Secretary), I. Crickmer.

Rules—T. Blunn (Chairman), A. J. H. Wickens (Hon. Secretary), M. Greatrex, W. Mitton, K. Watts, E. G. White.

Selection and Ranking—N. Reeve (Chairman), A. Shipley (Hon. Sec.), J. A. Leach, M.B.E. (N.P. Captain, Men's team), R. J. Crayden (N.P. Captain, Women's team), L. F. Landry, (N.P. Captain, Junior team), E. Reay.

Tournaments—W. Mitton (Chairman), D. Game (Hon. Secretary), A. M. Lijinsky, L. F. Landry, M. Goldstein, G. Yates, P. Reid.

Umpires and Referees—G. James (Chairman), C. Clemett (Hon. Secretary), W. Goldfinch, A. J. Hobday, G. Owen, E. G. White.

PANELS

Advisory Equipment—V. Barna, T. Blunn, J. H. Carrington, G. Decker.
V. Barna Award—V. Barna, T. Blunn, M. Goldstein.
Archives/Library—I. Crickmer.

REPRESENTATIVES

County Championships—L. Thompson.
Central Council of Physical Recreation—D. P. Lowen.
Trade Fund Committee—I. C. Eyles, N. K. Reeve, T. Blunn, D. R. Tremayne (Secretary).

Members of Sub-Committees who are not members of the National Council

V. Barna	28 Elm Park Court, Pinner, Middlesex. VICtoria 6868 (O). PINner 2341 (H).
R. J. Crayden	J. Grennell Road, Sutton, Surrey. Fairlands 5004 (H).
G. W. Decker	45 Chatsworth Road, Bournemouth. Bournemouth 55395 (H).
S. Frohlick	20 Rosemary Avenue, Blackpool.
W. Goldfinch	40 Popes Lane, Sturry, Nr. Canterbury. Sturry 283 (H). Canterbury 66025 (O).
G. James	19 St. Ann's Villas, London, W. 11. 602 1154 (H).
L. F. Landry	Hall Flat, 96 Haverstock Hill, Hampstead, N.W.3. GULLiver 9094 (H).
D. P. Lowen	11 Elgar Avenue, Ealing, London, W.5. EALing 2966 (H).
J. Leach, M.B.E.	10 Theydon Place, Epping, Essex EP 5 3826 (H).
G. Owen	13 Bournemouth Road, Orpington, Kent, Orpington 28568 (H).
G. Steggall	276 Northridge Way, Hemel Hempstead, Herts.,
A. K. Vint, O.B.E.	69a St. Helens Park Road, Hastings. Sussex. Hastings 1387 (H).
E. G. White	"Hillcrest," 23 Nonsuch Walk, Cheam, Sutton, Surrey. Ewell 7034 (H).
A. J. H. Wickens	"West Penbire," 2 Frensham Walk, Farnham Common, Slough, Bucks. Farnham Common 3053 (H).
C. H. Wyles	48 Eversfield Place, St. Leonards-on-Sea, Sussex. Hastings 391 (H).

OPEN CHAMPIONSHIPS

(Closing date for entries approx 14 days before event)

BOURNEMOUTH OPEN

13th November, 1966. Drill Hall, Alder Road, Branksome, Bournemouth.
Secretary : C. J. Buck, 18 Sherwood Avenue, Parkstone, Poole.
Events : M.S. M.D. W.S. W.D. X.D. G.S. B.S.

CAMBRIDGESHIRE OPEN

1st/2nd April, 1967. Corn Exchange, Cambridge.
Secretary : Mrs. M. A. Cornwell, 28 Harding Way, Cambridge.
Events : M.S. M.D. W.S. W.D. X.D. B.S. G.S.

CUMBERLAND OPEN

26th November, 1966. The Drill Hall, Catherine Street, Whitehaven.
Secretary : R. Rigg, 1 Park View, Sunnyhill, Whitehaven, Cumberland.
Events : M.S. M.D. W.S. W.D. X.D. B.S. G.S.

EAST OF ENGLAND OPEN

17th/18th September, 1966. Butlins Holiday Camp, Skegness.
Secretary : K. W. Dewar, 133 Eastgate, Louth.
Events : M.S. M.D. W.S. W.D. X.D. B.S. G.S.

ESSEX OPEN

14th/15th January, 1967. Harlow Sports Centre, Harlow.
Secretary : W. D. Wadling, 39 Ramsgill Drive, Newbury Park, Ilford.
Events : M.S. M.D. W.S. W.D. X.D. J.S.

HULL AND EAST RIDING OPEN

5th November, 1966. Madeley Street Baths, Hull.
Secretary : K. H. F. Jordan, "Burnlea," 57 Skillings Lane, Brough, E. Yorks.
Events : M.S. M.D. W.S. W.D. X.D. V.S. B.S. G.S.

KENT OPEN

28th/29th January 1967. Marine Pavilion, Folkestone.
Secretary : Chas. M. Wyles, 48 Eversfield Place, St. Leonards on Sea, Sussex.
Events : M.S. M.D. W.S. W.D. X.D. V.S. Y.G.S. Y.B.S.

LANCASHIRE OPEN

14th January, 1967. Hawker Siddeley Dynamics, Lostock, Bolton, Lancs.
Secretary : G. Fackrell, 11 Halton Road, Great Sankey, Warrington, Lancs.
Events : M.S. M.D. W.S. W.D. X.D. V.S. B.S. G.S.

MERSEYSIDE OPEN

28th/29th October, 1966. Dunlops Canteen Speke.
Secretary : B. A. Leeson, 16 Avalon Road, Liverpool 12.
Events : M.S. M.D. W.S. W.D. X.D. V.S. B.S. G.S.

MIDDLESEX OPEN

10th/11th December, 1966. Hanwell Community Centre, Hanwell, London, W.7.
Secretary : Miss I. Moss, 49 Okehampton Road, Kensal Rise, London N.W.10.
Events : M.S. M.D. W.S. W.D. X.D. B.S. G.S.

MIDLAND OPEN

11th February, 1967. Rover Social Club, Lode Lane, Solihull.
Secretary : M. Goldstein, 415 Moseley Road, Birmingham.
Events : M.S. M.D. W.S. W.D. X.D. V.S. B.S. G.S. J.D.

NEWBURY OPEN

3rd/4th December, 1966. Corn Exchange, Market Place, Newbury.
Secretary : A. A. J. Mosson, 29 Croft Road, Newbury, Berkshire.
Events : M.S. M.D. W.S. W.D. X.D.

NORTH OF ENGLAND OPEN

7th/8th October, 1966. Mather and Platt, Park Works, Newton Heath, Manchester.
Secretary : L. W. Jones, 261, Mauldeth Road, Purnage, Manchester 19.
Events : M.S. M.D. W.S. W.D. X.D. G.S. B.S.

NORTH EAST OF ENGLAND OPEN

25th/26th/27th March, 1967. Wallis Holiday Camp, Cayton Bay, Scarborough.
Secretary : W. Mitton, 16 The Whins, Newby, Scarborough.
Events : M.S. M.D. W.S. W.D. X.D. V.S. B.S. G.S. Y.S. Con. Handicap Men.
Con. Handicap Women.

NORTH MIDDLESEX OPEN

24th/25th September, 1966. Drill Hall, North Finchley, N.12.
Secretary : L. Pilditch, 16 Hilton Avenue, North Finchley, London, N.12.
Events : M.S. M.D. W.S. W.D. X.D. B.S. G.S.

NORTHUMBERLAND OPEN

11th March, 1967. Canteen, Ministry of Pensions, Newcastle upon Tyne.
Secretary : T. A. Morpeth, 59 Preston Avenue, North Shields.
Events : Information not available.

SOUTH YORKSHIRE OPEN

4th February, 1967. Norfolk Barracks, Sheffield.
Secretary : A. Head, 1 Popular Avenue, Beighton, Nr. Sheffield.
Events : M.S. M.D. W.S. W.D. X.D. Y.S. G.S.

SUSSEX OPEN

22nd/23rd October, 1966. White Rock, Pavilion, Hastings.
Secretary : D. N. Tyler, 1 York Buildings, Hastings.
Events : M.S. M.D. W.S. W.D. X.D. V.S.

YORKSHIRE OPEN

18th February, 1967. Railway Institute, York.
Secretary : F. Briggs, 10 Merton Gardens, Farsley, Pudsey, Yorkshire.
Events : M.S. M.D. W.S. W.D. X.D. V.S.

JUNIOR TOURNAMENTS

BRITISH LEGION (SLOUGH) JUNIOR OPEN

6th/7th May, 1967. Slough College of Further Education.
 Secretary : J. A. Pacitto, 73 Bexley Street, Windsor, Bucks.
 Events : U/17 B.S. G.S. B.D. G.D. X.D. U/15 B.S.G.S. B.D. G.D. U/13 B.S. G.S. U/11 B.S. G.S.

CRESCENT JUNIOR GIRLS

12th/13th May, 1967. Drill Hall, Crown Quay Lane, Sittingbourne.
 Secretary : F. G. Mannooch, 216 Park Road, Sittingbourne, Kent.
 Events : Information not available.

CHESHIRE JUNIOR OPEN

25th February, 1967. Byrne Avenue Baths, Birkenhead.
 Secretary : R. S. Boyles, 545 Old Chester Road, Rock Ferry, Birkenhead.
 Events : U/15 B.S. G.S. U/17 B.S. G.S. J.B.D. J.G.D. J.X.D.

ESSEX JUNIOR OPEN

10th/11th September, 1966.
 Secretary : R. G. Frost, 223 Church Road, Manor Park, London, E.12.
 Events : U/17 B.S. G.S. B.D. G.D. X.D. U/15 B.S. G.S. B.D. G.D. U/13 B.S. G.S. U/11 B.S. G.S.

KENT JUNIOR OPEN

5th/6th November, 1966. Marine Pavilion, Folkestone.
 Secretary : F. G. Mannooch, 216 Park Road, Sittingbourne.
 Events : U/17 B.S. G.S. B.D. G.D. X.D. U/15 B.S. G.S. B.D. G.D. X.D. U/13 B.S. G.S. B.D. G.D. U/11 B.S. G.S.

NEWBURY JUNIOR OPEN

9th October, 1966. Corn Exchange, Market Place, Newbury.
 Secretary : A. A. J. Mosson, 29 Croft Road, Newbury, Berkshire.
 Events : U/17 B.S. B.D. G.D. X.D. U/15 B.S. G.S. B.D. G.D. X.D. U/13 B.S. G.S.

NORTH HERTS JUNIOR OPEN

29th/30th October, 1966. Taylor Inst. Co. Gunners Wood Road, Stevenage, Herts.
 Secretary : N. A. English, 64 Baldock Road, Letchworth, Herts.
 Events : U/17 B.S. G.S. B.D. G.D. X.D. U/15 B.S. G.S. B.D. G.D. X.D. U/13 B.S. G.S. U/11 B.S. G.S.

SUSSEX JUNIOR OPEN

19th March, 1967. Assembly Hall, Worthing.
 Secretary : M. D. Oldham, 25 Offington Gardens, Worthing.
 Events : U/17 B.S. G.S. B.D. G.D. U/15 B.S. G.S. B.D. G.D. U/13 B.S. G.S. U/11 B.S. G.S.

YORKSHIRE JUNIOR OPEN

7th January, 1967. Madeley Street Baths, Hull.
 Secretary : R. Balmford, 205 Park Avenue, Hull.
 Events : U/17 B.S. G.S. U/15 B.S. G.S. B.D. G.D. X.D.

RESTRICTED OPEN

BEDFORD AND DISTRICT RESTRICTED OPEN

23rd April, 1967. Badminton Hall, Bradgate Road, Bedford.
 Secretary : Mrs. E. W. Pacey, 17 Brook Street, Bedford.
 Events : M.S. M.D. W.S. W.D.

HASTINGS TIGERS AREA EVENT

13th November, 1966. Bexhill Athletic Club, Bexhill.
 Secretary : J. F. Wyles, 48a Eversfield Place, St. Leonards on Sea.
 Events : M.S. M.D. W.S. W.D. X.D.

HYTHE RESTRICTED OPEN

5th February, 1966. The Institute, Hythe, Kent.
 Secretary : R. J. Weaver, Hunters Moon, 9 St. Hilda's Road, Hythe, Kent.
 Events : M.S. M.D. W.S. W.D.

MERTON RESTRICTED OPEN

30th October, 1966. Winton Y.M.C.A. Jameson Road, Winton.
 Secretary : Mrs. J. H. Coop, 96 Headswell Avenue, Ensby Park, Bournemouth.
 Events : M.S. M.D. W.S. W.D. X.D. G.S. B.S.

NORTH BOURNEMOUTH CLUB RESTRICTED OPEN

5th February, 1967. Y.M.C.A. Winton.
 Secretary : C. B. Cashell, 16 Victoria Avenue, Winton, Bournemouth.
 Events : M.S. M.D. W.S. W.D. X.D. J.S.

OLD BOYS CLUB ANNUAL INVITATION EVENT

4th May, 1967. 241 Mile End Road, London, E.1.
 Secretary : Old Boys Club, 241 Mile End Road, London E.1.
 Events : M.S.

OXFORDSHIRE RESTRICTED OPEN

22nd January, 1967. Osberton Radiators, Oxford.
 Secretary : R. J. Smurthwaite, 34 Springfield Oval, Witney, Oxon.
 Events : Information not available.

PONTEFRAC RESTRICTED OPEN

28th January, 1967. Assembly Rooms, Pontefract.
 Secretary : G. L. Johnson, 17 Rhodes Crescent, Pontefract.
 Events : M.S. M.D. W.S. W.D. X.D. V.S. B.S. G.S.

PORTSMOUTH RESTRICTED OPEN

20th November, 1966. South Parade Pier, Southsea.
 Secretary : P. Goldring, 52 Winter Road, Southsea, Hants.
 Events : M.S. M.D. W.S. W.D. X.D. B.S. G.S.

WINTON Y.M.C.A. RESTRICTED OPEN

8th January, 1967. Winton Y.M.C.A.
Secretary : J. J. C. Luther, "Hamryn," 39 Larksfield Avenue, Bournemouth.
Events : M.S. M.D. W.S. W.D. X.D. B.S. G.S.

WOODFIELD INVITATION EVENT

5th/6th November, 1966. Woodfield Social and Sports Club.
Secretary : J. Hughes, 8 Oxbarrow Avenue, Wolverhampton.
Events : M.S. M.D. W.D. W.D. X.D. J.S. V.S.

YEOVIL AREA "AMERICAN" OPEN

26th February, 1967. Houndstone Camp, Nr. Yeovil.
Secretary : Mrs. J. F. Coleman, "Greenwood," 7 Priory Close, Nash Lane, Yeovil, Somerset.
Events : M.S.

COUNTY ASSOCIATIONS

BEDFORDSHIRE

President : Lord Luke of Pavenham.
Chairman : D. W. Ironmonger, 47 Ryecroft Way, Stopsley, Luton.
Hon. Secretary : C. J. Rowley, 7 Holland Road, Luton. Luton 53018.
Hon. Treasurer : P. A. Denton, 30 Wardover Crescent, Luton.
Umpires Committee Secretary : Secretary.
Magazine Secretary : Secretary.
Press Officer : Chairman.
Affiliated Leagues : Luton & Dist., Bedford, Dunstable, Leighton Buzzard.
Directly Affiliated Clubs : Pulford School, Leighton Buzzard.
County Councillor :

BERKSHIRE

President : K. Stanley, "Welbeck," Shinfield Road, Reading.
Chairman : A. M. Lijinsky, 9 Duncan Road, Woodley, Reading.
Hon. Secretary : Mrs. S. Fellingham, 27 Firlands, Bracknell.
Hon. Treasurer : J. Masters, 21 Wyndam Road, Newbury.
Umpires Committee Secretary : H. Larcombe, 1 Grange Avenue, Reading.
Magazine Secretary : Mrs. R. Heaps, 22 Holmes Road, Reading.
Press Officer : Reading 63097.
Affiliated Leagues : Bracknell, Didcot, Maidenhead, Newbury, Reading.
County Councillor : A. M. Lijinsky.

BUCKINGHAMSHIRE

President : S. H. Crevald, 2 Ousley Road, Windwor, Berks. Windsor 62068.
Chairman : L. T. Flint, 95 Woodside Road, Amersham, Bucks. Amersham 1785.
Hon. Secretary : L. Thompson, "Auchmead," The Avenue, Sunnymeads Wrybury, Bucks. Wrybury 2526.
Hon. Treasurer : A. J. H. Wickens, "West Pentire," 2 Frensham Walk, Farnham Common, Slough. Farnham Common 3053.
Umpires Committee Secretary : R. Wickens, 7 Opendale Road, Burnham, Bucks. Burnham 2354.
Magazine Secretary : I. White, 8 Parkland Avenue, Slough, Bucks. Slough 41455.
Press Officer : I. White.
Affiliated Leagues : Aylesbury, Bletchley, Chalfont, Chiltern, High Wycombe, Non-Conformist Churches, Slough.
Affiliated Clubs : A. H. W. Youth Club (Bletchley).
County Councillor : L. Thompson.

CAMBRIDGESHIRE

President : W. J. Rogerson, 38 Green End Road, Cambridge.
Chairman : P. R. Silk, 23 Hicks Lane, Girton, Cambs. Cambridge 76796.
Hon. Secretary : Mrs. M. A. Cornwell, 28 Harding Way, Cambridge. 59168.
Hon. Treasurer : Mrs. M. A. Cornwell.
Umpires Committee Secretary : R. Stearn, 132 Thoday Street, Cambridge.
Magazine Secretary : A. A. Brotchie, 59 Hertford Street, Cambridge.
Press Officer : L. R. J. Constable, 8 Benet Close, Milton, Cambs.
Affiliated Leagues : Cambridge, Ely, Wisbech.
County Councillor : W. J. Rogerson.

CHESHIRE

President : C. H. Renshaw, 21 Gloucester Road, Hyde, Cheshire.
Chairman : F. Thomas, 12 Williamson Street, Reddish, Stockport, Cheshire.
Hon. Secretary : G. T. H. Fackrell, 11 Halton Road, Great Sankey, Warrington, Lancs. Penketh 3696.
Hon. Treasurer : G. T. H. Fackrell.
Umpires Committee Secretary : F. Thomas.
Magazine Secretary : E. A. Brown, 7 Station Road, Levenshulme, Manchester 19.
Press Officer : G. R. Yates, 43 Knowsley Road, Smithills, Bolton, Lancs. Bolton 42223.
Affiliated Leagues : Chester, Crewe, Ellesmere Port Youth, Hyde, Macclesfield, Mid-Cheshire, Nantwich Meths, Sale, Stockport, Stockport Youth, Wirral.
County Councillor : J. Kennerley, 31, Townsend Road, Lostock Graham, Northwich, Cheshire.

CORNWALL

President : Marion T. R. Pearce, J.P., Chy-an-Porth, St. Ives.
Chairman : R. D. I. Charlesworth, 72 The Ropewalk, Alverton, Penzance. Tel. 3712 (H).
Hon. Secretary :
Hon. Treasurer : A. R. Bunt, 46 Carclew Street, Truro, Cornwall. 2014 (Office).
Affiliated Leagues : West Cornwall, Biscovey & District.
Affiliated Clubs : Torpoint.
Schools Liaison Officer : D. VV. Blackford, "Paddocks End," Wheal Venture Rd. St. Ives.
County Councillor :

CUMBERLAND

President : Rt. Hon. The Earl of Lonsdale, Lowther, Penrith, Cumberland.
Chairman : T. Wilcock, Central Hotel, Duke Street, Whitehaven, Cumberland.
Hon. Secretary : R. Rigg, 4 Tower Hill, Whitehaven, Cumberland. Whitehaven 3739.
Hon. Treasurer : N. Brannon, 69 Snebro Road, Mirehouse Whitehaven, Cumberland. Whitehaven 2441.
Umpires Committee Secretary : R. Rigg.
Press Officer : R. Rigg.
Affiliated Leagues : Whitehaven & District, Carlisle & District.
Affiliated Clubs : Millom Grammar School.
County Councillor : G. Yates, 43 Knowsley Road, Smithills, Bolton, Lancs.

DERBYSHIRE

President : L. Swale, 1/2 Sheffield Road, Chesterfield.
Chairman : L. A. Chatwin, 92 Sawcroft Road, Derby. Tel. 63534.
Hon. Secretary : C. W. Blair, 9 High Street, Old Whittington Chesterfield. Tel. 5671.
Hon. Treasurer : D. S. Fearn, 14 Gritstone Road, Matlock.
Umpires Committee Secretary : L. A. Chatwin.
Press Officer : A. W. Reeves, 142 Ewfield Road, Derby.
Affiliated Leagues : Derby, Matlock Chesterfield, Burton Senior, Staveley, Clay Cross, Eckington.
Directly Affiliated Clubs : Aertex, Sports Club Alfreton.
County Councillor : M. Allsop, 424 Kedleston Road, Allestree, Derby.

DEVON

President : J. Michelmores, Newton Abbot, Devon.
Chairman : H. S. Moran, 17 St. Vincents Street, Stoke, Plymouth.
Hon. Secretary : Mrs. Francis Jarvis, 6 Linden Terrace, Gwyn Road, St. Jude's, Plymouth.
Hon. Treasurer : N. Hooper, 17 St. Ann's Road, Polsloe Park, Exeter.
Umpires Committee Secretary : Mrs. Frances Jarvis.
Match Secretary : Mr. R. Ley, 99 Lancaster Gardens, Whitleigh, Plymouth.
Affiliated Leagues : Exeter, Exmouth, Plymouth, South Devon and Torbay, Tiverton.
County Councillor : Mrs. F. Jarvis.

DORSET

President : W. R. Breed, 18 Greenhill, Weymouth, Dorset. Weymouth 351.
Chairman : D. J. Meech, 339 Dorchester Road, Weymouth, Dorset. Weymouth 3514.
Hon. Secretary : Mrs. B. K. Appleby, 3 Penn Hill Avenue, Parkstone, Poole, Dorset. Poole 3736 (Business only).
Hon. Treasurer : D. G. Symonds, 8 Belvidere, Weymouth, Dorset.
Hon. Match Sec. : G. W. Biles, 79 Dennis Road, Weymouth. Weymouth 3286.
Umpires Committee Secretary : P. H. Northcott, 31 Hillcrest Road, Weymouth. Weymouth 2455.
Affiliated Leagues : Dorchester, Poole, Weymouth, Wimborne.
County Councillor : D. J. Meech.

DURHAM

President : B. Long, 9a Tyne Road, South Stanley, Stanley 636.
Chairman : C. W. Britton, 16 Woodville Crescent, Sunderland. Tel. 6180.
Joint Hon. Secs. : E. Reay and Mrs. J. F. Reay, 7 Forfar Street, Fulwell, Sunderland. Sunderland 57818. (H) 56031. (O)
Hon. Treasurer : E. Reay.
Umpires Committee Secretary : E. Reay (details as above).
Magazine Secretary : Mrs. J. F. Reay.
Press Officer : E. Reay (details as above).
Affiliated Leagues : Bishop Auckland, Darlington, Durham & District, Hartlepool, Murton, Newton Aycliffe, Philadelphia, Stanley, Stockton, Sunderland, South Shields, North East Summer.
County Councillor : E. Reay.

ESSEX

President : J. A. Leach, M.B.E. 10 Theydon Place, Epping, Essex. Epping 3826.
Chairman : G. J. Eagle, "Capel," 26 Harrogate Road, Hockley, Essex. Hockley 798.
Hon. Secretary : H. Walker, 118 Avon Court, Avon Road, Upminster Cranham, Essex. Upminster 4031.
Hon. Treasurer : Mr. A. A. Simpson, 54 Leonard Road, Chingford, London, E.4. Larkwood 5907.
Umpires Committee Secretary : S. G. Beard, 40 Goodwood Avenue, Hutton, Essex. Brentwood 617.
Magazine Secretary : Harry Walker (details as above).
Press Officer : Harry Walker (details as above).
Affiliated Leagues Barking Youth, Barking, Basildon, Billericay, Braintree, Brentwood Youth, Chelmsford, Colchester, Clacton, Dagenham, Dagenham Church, East London, Harlow, Ilford, Newham Youth League, Romford, Silvertown, Southend, Thurrock, Walthamstow, Walthamstow Youth Clubs Association, West Essex.
Affiliated Clubs : St. Lukes Youth Club, Canning Town, London, E.16.
Special Affiliations : Essex Schools Table Tennis Association, Southend-on-Sea Education Committee.
County Councillor : H. Walker.

GLOUCESTERSHIRE

President : His Grace The Duke of Beaufort, K.G., P.C., G.C.V.O., Badminton, Gloucestershire.
Chairman : F. C. Newell, J.P., 202 Old Bath Road, Cheltenham. Cheltenham 25674.
Hon. Secretary : L. C. T. Davis, 31 Old Church Road, Clevedon, Nr. Bristol. Clevedon 3715.
Hon. Treasurer : L. C. T. Davis (details above).
Umpires Committee Secretary : Mrs. P. Archdale, 26 West View Road, Keynsham, Bristol. Keynsham 3379.
Press Officer : L. Smith Esq., "Endfield" Cowle Road, Stroud, Gloucestershire.
Affiliated Leagues : Bristol District, Cheltenham District, Gloucester District, Stroud District.
County Councillor : L. C. T. Davis.

HAMPSHIRE

President : K. H. Course, 42 Bounty Road, Basingstoke, Hants. Basingstoke 1021.
Chairman : B. J. Roberts, 45c Porchester Road, Bournemouth.
Hon. Secretary : L. W. Vaill, Mena House, The Highway, Sutton, Surrey. Vigilant 4995.
Hon. Treasurer : R. C. Duthie, 11 Wooton Road, Lee-on-Solent.
Umpires Committee Secretary : J. R. Bell, 34 Goldsmith Avenue, Southsea.
Magazine Secretary : T. W. Grant, 56 Bursledon Road, Southampton.
Affiliated Leagues : Aldershot & District, Andover & District, Basingstoke & District, Bournemouth, Gosport & District, Isle of Wight, Portsmouth & District, Southampton & District, South East Hants, Winchester & District.
County Councillor M. S. Greatrex, 38 Cecil Avenue, Shirley, South'pton.

HERTFORDSHIRE

President : K. F. Sewell, 488 Hatfield Road, St. Albans.
Chairman : A. Seaholme, 12 Ashfields, High Road, Leavesden, Watford, Herts.
Hon. Secretary : David Game, "Idle Rocks," Station Road, Puckeridge Ware, Herts.
Hon. Treasurer : Miss. M. East, 2 Gladstone Road, Watford, Herts.
Umpires Committee Secretary : T. R. Caponhurst, 24 Bushey Frove Road, Watford.
Magazine Secretary G. P. H. Butcher, 47 St. Laurence Drive, Wormley, Nr. Broxbourne, Herts.
Press Officer :
Affiliated Leagues : Bishop's Stortford, Borehamwood Youth, Cheshunt, Hemel Hempstead, Hertford, Letchworth Inter-Works, North Herts Association (formed by Hitchin, Letchworth and Stevenage Leagues), St. Albans, Watford and Welwyn Garden City and Hatfield.
County Councillor D. Game.

HUNTINGDONSHIRE

President : The Rt. Hon. Sir David Renton, K.B.E., Q.C. M.P.
The Moat House, Abbots Ripton, Huntingdon.

Chairman : Mr. M. Webb, 2 Linden Grove, Godmanchester,
Huntingdon. Tel. 469.

Hon. Secretary : Mrs. H. I. Irons, 13 Wilkinson Close, Eaton Socon,
St. Neots., Huntingdon.

Hon. Treasurer : Mr. B. Arnold, 16 Parkway, St. Ives, Huntingdon.
Huntingdon 4305 (Business)

Umpires Committee : Mr. C. Olver, 60 Avenue Road, St. Neots., Hunts.
Secretary : St. Neots. 2764.

Magazine Secretary : Mr. L. Saywell, 9 The Crescent, St. Neots. Hunts.

Press Officer : Mr. C. Dale, Bishops Walk, Barnack, Nr. Stamford,
Lincolnshire. Bainton 395.

Affiliated Leagues : Huntingdon Central, Peterborough & District, St.
Neots & District.

County Councillor :

KENT

President : C. Stuart, Chiesman, Longways, Denbridge Road,
Bickley, Kent.

Chairman : C. Jaschke, 'Casa Mia,' Church Road, Footscray,
Sidcup, Kent. Footscray 5845.

Hon. Secretary : Chas. M. Wyles, 48 Eversfield Place, St. Leonards-on-
Sea, Sussex. Tel. Hastings 391.

Hon. Treasurer : D. N. Mitchell, 21a Hayne Road, Beckenham, Kent.
Beckenham 9124.

Umpires Committee : G. A. Owen, 13 Bournewood Road, Orpington, Kent.
Orpington 28568.

Magazine Secretary :

Press Officer : Chas. M. Wyles.

Affiliated Leagues : Ashford, Beckenham, Bromley, Canterbury, Deal,
Dover, Folkestone, Gravesend, Maidstone,
Medway Town, N.W. Kent, Sittingbourne,
Thanet, Tonbridge, Tunbridge Wells, Woolwich.

Affiliated Clubs : Beverley T.T. Club : Folkestone, Crescent Club,
Sittingbourne Rolvenden T.T. Club, Sevenoaks
Youth Club.

Special Affiliation : Kent Association of Boys Clubs, Kent Association of
Youth Clubs, Kent County Constabulary Sports
Club, Kent Fire Brigade Sports Club, Southwark
Federation of Catholic Youth Clubs.

County Councillor : C. Jaschke.

LANCASHIRE

President : J. Livingstone, 30 Shafesbury Road, Manchester 8.

Chairman : A. E. Upton, 82 St. Christopher's Avenue, Liverpool 21.

Hon. Secretary : G. T. H. Fackrell, 11 Halton Road, Great Sankey,
Warrington. Penketh 3696

Hon. Treasurer : G. T. H. Fackrell,

Umpires Committee : F. Thomas, 12 Williamson Street, Reddish, Stockport,
Secretary : Cheshire.

Magazine Secretary : E. A. Brown, 7 Station Road, Levenshulme, Manchester
19.

Press Officer : G. R. Yates, 43 Knowsley Road, Smithills, Bolton,
Lancs. Bolton 42223.

Affiliated Leagues : Ashton-u-Lyne, Barrow, Blackburn, Blackpool, Bolton
S.S.S., Burnley, Bury, Darwen, Farnworth,
Horwich, Lancaster & Morecambe, Liverpool,
Liverpool Business Houses, Lytham St. Annes,
Manchester, Manchester Banks, Manchester Fur-
ther Education, Nelson, Hewton-le-Willows,
Oldham, Preston, Radcliffe & Prestwich, Rochdale
Salford & Eccles, Southport, St. Helens, Urmston,
Warrington, Wigan, Widnes.

County Councillor : G. T. H. Fackrell,

LEICESTERSHIRE

President : A. G. Thomas, 15 Kendrick Drive, Oadby, Leics.

Chairman : P. Reid, 47 New Fields Avenue, Braunstone, Leicester.

Hon. Secretary : P. Reid (details as above).

Hon. Treasurer : J. C. Grimley, 15 Turvey Lane, Lung Whatton, near
Loughborough, Leicestershire.

Umpires Committee : P. Reid (details as above).

Magazine Secretary : P. Reid (details as above).

Press Officer : P. Reid (details as above).

Affiliated Leagues : Leicester & District, Loughborough & District,
Coalville & District, Melton Mowbray & District,
Hinckley Youth.

County Councillor : P. Reid (details as above).

LINCOLNSHIRE

President : S. Haigh, Piccadilly, Station Road, Waddington,
Nr. Lincoln.

Chairman : J. J. Robertson, 22 George Street, Louth, Lincs.

Hon. Secretary : K. W. Dewar, 133 Eastgate, Louth, Lincs.

Hon. Match Sec. : H. J. Flowers, 18 Margaret Drive, Boston, Lincs.

Hon. Treasurer : T. D. Atkinson, Klondyke Cottage, Kexby Lane,
Gainsborough, Lincs.

Umpires Secretary : Miss D. Wells, 79 Foster Street, Lincoln.

Hon. Directors of : B. Hill, Peninaen, Low Road, Wyberton, Boston,
Coaching : Lincs.

Magazine Secretary : Miss J. Scott, 34 Bridge Street, Laxlyby, Lincoln.

Affiliated Leagues : Louth, Boston, Spalding, Gainsborough, Skegness,
Lincoln, Grimsby, Scunthorpe.

County Councillor : K. W. Dewar.

MIDDLESEX

President : Sir S. Graham Rowlandson, M.B.E., J.P., F.C.A., Salisbury House, London Wall, E.C.1.
Chairman : E. R. A. Connell, 5 Glebe Road, Staines. Staines 52625.
Hon. Secretary : Miss I. Moss, 49 Okehampton Road, London, N.W.10 WIL 7367.
Hon. Treasurer : As Hon. Secretary above.
Umpires Committees : J. M. Wright, 124 Rusthall Avenue, Bedford Park, W.4.
Secretary : CHI 7485.
Magazine Secretary : L. Hoffman, 33 Grove Avenue, N.10. TUD 5115.
Affiliated Leagues : Acton & District, Barnets & District, Central, City of London, E.D.W.A.S.C.A., Film Renters', London Civil Service, North Acton, Northmet, North Middlesex, South-West Middlesex, Staines & District, Uxbridge & District, Wembley & Harrow, Willesden & District.
Affiliated Clubs : Fulham Table Tennis Centre, Lou Hoffman Table Tennis Club, Lensbury T.T. Club.
County Councillor : L. Hoffman (further details above).

NORFOLK

President : R. J. Perry, 42 Lowther Road, Norwich. NOR 69D. Norwich 54839.
Chairman : G. F. Rix, 118 Whitehall Road, Norwich, NOR 99F. Norwich 26643.
Hon. Secretary : E. J. Fairhead, 11 Brabazon Road, Norwich, NOR 57N. Norwich 46758.
Hon. Treasurer : S. L. Lewis, 85 St. George's Road, Great Yarmouth.
Umpires Committee : Wes Haydock, 31 Buxton Avenue, Gorleston, Great Yarmouth. Goleston 1717.
Secretary :
Magazine Secretary : J. S. Penny, 12/92 St. Giles Street, Norwich, NOR16E. Norwich 22651.
Press Officer : E. J. Fairhead (details as above).
Coaching Secretary : M. Ewles, 75 Booty Road, Norwich, NOR 78T.
Aliated Leagues : Cromer, Dereham, Fakenham, Great Yarmouth, King's Lynn, North Walsham, Norwich, Wymondham.
Affiliated Clubs : Denton Y.C.
County Councillor : D. J. Fairhead (details as above).

NORTHUMBERLAND

President : B. Kinnair, 41 Marine Terrace, Blyth, Northumberland.
Chairman : H. S. Lawson, 99 Broadway West, Newcastle on Tyne 3.
Hon. Secretary : D. M. Robson, 3 Houxty Road, South Wellfield, Whitley Bay, Northumberland. Shiremoor 383 (H).
Hon. Treasurer : R. Ormond, 14 Saxton Grove, Hith Heaton, Newcastle on Tyne 7.
Umpires Committee : H. Dignan, 6 Cornhill Crescent, Mill Estate, North Shields.
Secretary :
Magazine Secretary : A. Warents, 23 Hawthorn Road, Gosforth, Newcastle upon Tyne. 3. Newcastle 54849 (H).
Press Officer : A. Warents, (details as above).
Affiliated Leagues : Berwick, Hexham, Northern Premier T.T. League (now in process of Affiliation).
County Councillor : D. M. Robson (details as above).

NOTTINGHAMSHIRE

President : D. S. Davies, 9 West Bank Wynd, Mansfield.
Chairman : E. Taylor, 17a Herbert Road, New Basford, Notts. Tel. 63543 (H).
Hon. Secretary : J. D. Ellis, 145a Station Road, Sutton-in-Ashfield, Notts. Mansfield 7156 (B).
Hon. Treasurer : J. D. Ellis (details as above).
Umpires Committee : J. D. Ellis (details as above).
Secretary : P. A. Hull, 299 Gateford Road, Worksop, Notts.
Inter-Town League : Dukeries, Eastwood, Grantham, Mansfield, Newark, Nottingham.
Affiliated Leagues :
County Councillor : E. Taylor (details as above).

OXFORDSHIRE

President : Miss M. C. Bateson, 78 Bullingdon Road, Oxford. Tel. 47878.
Chairman : H. L. Dennison, M.A., 73 Abingdon Road, Drayton, Berkshire.
Hon. Secretary : R. J. Smurthwaite, 34 Springfield Oval, Witney, Oxon. Witney 3224.
Hon. Treasurer : C. Jackson, 69 Evans Road, Eynsham, Oxon.
Umpires Committee : A. J. Hobday, 2 South Bar, Banbury, Oxon. Banbury 3749.
Magazine Secretary : C. W. Jackson (details as above).
Press Officer : E. J. Hawkins, 79 Home Close, Wolvercote, Oxford. Tel. 48461, Ext. 223 (Office).
Affiliated Leagues : Oxford University, Witney & District, Oxford & District, Banbury & District Oxford University Womens.
Affiliated Clubs : Oxford University.
County Councillor : A. J. Hobday (details as above).

SHROPSHIRE

Chairman : E. W. Bridgwood, 28 Ashley Street, Shrewsbury.
 Hon. Secretary : M. Jones, 52 Little Horlescott Lane, Shrewsbury.
 Hon. Treasurer : A. R. Dabbs, 7 Central Drive, Longden Road, Shrewsbury.

Umpires Committee
 Magazine Secretary :
 Press Officer :
 Affiliated Leagues : Ludlow, Shrewsbury, Wellington, Whitchurch.
 County Councillor :

SOMERSET

President : H. A. Whitmore, "Pickwick" Bailbrook, Bath, Somerset.
 Chairman : R. Philpotts, 33 Palmer Street, Western-Super-Mare, Somerset.
 Hon. Secretary : A. R. E. Richens, No. 3 Flat "Malvernhurst," 72 Berrow Road, Burnham on Sea.
 Hon. Treasurer : G. Philpott, c/o Lloyds Bank, Dorchester, Dorset.
 Umpires Committee Secretary : A. R. E. Richens (details as above).
 Press Officer : D. Pope, 22 The Glades, Rose Green, Bristol. 658734.
 Somerset League Match Secretary : L. Gosling, 21 Parkhurst Road, Weston-Super-Mare.
 County Match Sec.: R. Philpott, 33 Palmer Street, Weston-Super-Mare.
 County Coach Rep.: J. Whitmore, 'Ashlea,' Bailbrook Lane, Bath.
 Affiliated Leagues : Taunton & District, Bridgwater & District, Yeovil & District, Central Somerset, Bath & District.
 Affiliated Clubs : Weston-super-Mare Y.M.C.A., Failand.
 Junior League : Taunton, Chard, Bath, Weston Y.M.C.A., Shepton Mallet, Minehead.
 County Councillor : A. R. E. Richens (details as above).

STAFFORDSHIRE

President : A. T. Finney, "Far Croft" Knewhall, Nr. Stone, Staffs.
 Chairman : M. E. Scott, "Deep Meadow," Long Common, Claverley, Nr. Wolverhampton. Claverley 303.
 Hon. Secretary : R. H. Colcough, 105 Rosemary Crescent, West Goldthorn Park, Wolverhampton. Tel. 38154.
 Hon. Treasurer : J. Brittle, 28 Ashdene Close, Hanford, Stoke-on-Trent.
 Umpires Committee Secretary : G. Cooper, 193 Lichfield Road, Walsall.
 Press Officer : J. Pike, 15 Glendale Drive, Wombourne, Staffs.
 Affiliated Leagues : Bridgenorth, Cheadle, Dudley, Darlington, Leek, North Staffs Industries, Potteries, Stafford, Stone, Stoke Youth, Walsall, Wellington, West Bromwich, Wolverhampton.
 County Councillor : M. E. Scott (details as above).

SUFFOLK

President : Mrs. Doris Fox, 10 Woodbridge Road, East Ipswich.
 Chairman : Arthur E. Durrant, Flat 4, 29 Carlton Road, Lowestoft. Lowestoft 5631.
 Hon. Secretary : E. C. Dring, 30 Highfield Road, Stowupland, Stowmarket. Tel. 2391.
 Hon. Treasurer : M. J. Rogers, 44 Adelaide Road, Ipswich. Tel. 78943.
 Umpires Committee Secretary : Not Appointed.
 Magazine Secretary : D. Morley, 28 Dorset Close, Ipswich. Tel. 57261.
 Press Officer : John W. G. Keeble, 462 Birkfield Drive, Ipswich.
 Affiliated Leagues : Beccles & District, Ipswich & District, Lowestoft & District, Stowmarket & District, Suffolk N.A.L.G.O., Woodbridge & District.
 Affiliated Clubs : Chantry School, Newmarket Club.
 County Council : D. J. Barrett, 14 Sidegate Lane, West Ipswich, Suffolk.

SURREY

President : C. A. Bourne, Sunny Patch, Walpole Avenue, Chipstead, Surrey.
 Chairman : P. C. Lawes, 38 Shepherd's Lane, Guildhall, Surrey. Guildford 61127.
 Hon. Secretary : C. J. Clemett, 17a Leigh Road, Havant, Hants. Havant 4636.
 Hon. Treasurer : C. F. Joyce, 84 Tinsley Lane, Three Bridges, Sussex. Crawley 25942.
 Umpires Committee Secretary : S. E. A. Morton, 27 Westway, London, S.W.20. CHE 3443.
 Magazine Secretary : Mrs. P. A. Law, 22 Fabian Road, London, W.6.
 Press Officer : J. S. Forrest, 61c Radbourne Road, London, S.W.12.
 Affiliated Leagues : Byfleet, Croydon, Croydon Business Houses, Dorking, Dulwich, Guildford Leatherhead & Epsom, Reigate & Redhill, South London, Southwark, Sutton, Sutton Youth, Thames Valley, Wandsworth.
 Affiliated Clubs : Carshalton Youth, Kingston Grammar School, Surrey Junior, Teddington, West Wimbledon Society.
 County Councillor : C. J. Clemett (details as above).

SUSSEX

President : Ald. A. V. Nicholls, 94 Surrenden Road, Brighton 6.
Chairman : Keith Watts, 6 Windsor Road, St. Leonards-on-Sea.
Hon. Secretary : Miss Lillian E. Rymill, "Imatome" 192 Goring Way, Goring-by-Sea. Worthing 2700 (Bus.)
Hon. Treasurer : B. Gordon, 33 Southview Close, Shoreham-by-Sea.
Umpires Committee Secretary : Keith Watts (details as above).
Magazine Secretary : Keith Watts (details as above).
Press Officer : John Woodford, 56 Kings Drive, Eastbourne.
Affiliated Leagues : Bexhill, Brighton, Bognor Regis & Chichester, Crawley, Eastbourne, Hastings, Haywards Heath, Lewes, Worthing, Hastings Youth.
Affiliated Clubs : Crowborough Club.
County Councillor : K. Watts (details as above).

WARWICKSHIRE

President : A. J. Allen, c/o Flavells Ltd., Leamington Spa.
Chairman : C. G. Brown, 81 Kingsbridge Road, Nuneaton. 2712.
Hon. Secretary : M. Goldstein, 415 Moseley Road, Birmingham 12. Calthorpe 2739.
Hon. Treasurer : A. O. Hill, 21 Beech Avenue, Birmingham 32.
Umpires Committee Secretary : J. Sykes, 58 Beechwood Avenue, Solihull. Tel. 1994.
Magazine Secretary : Mrs. M. E. Evans, 17 Gaveston Road, Leamington Spa.
Press Officer : R. Morris, 172 Byron Road, Birmingham 10.
Affiliated Leagues : Birmingham, Coventry, Leamington, Nuneaton, Tamworth.
County Councillor : M. Goldstein (details as above).

WILTSHIRE

President : R. H. L. Rees, 84 Deverill Road, Warminster, Wilts.
Chairman : J. Pearce, Treverbyn, Dilton Marsh, Westbury, Wilts.
Hon. Secretary : Hazell, 75 Sandringham Road, Swindon, Wilts. Swindon 22390.
Hon. Treasurer : Miss K. Waters, 7 Harnham Road, Salisbury, Wilts.
Umpires Committee Secretary : A. Catchpole, 14 Downside Road, Netheravon, Wilts.
Press Officer : Mr. D. Hillier, 'Buena Vista' Devizes Road, Rowde, Nr. Devizes, Wilts. Tel. Devizes 146.
Affiliated Leagues : Swindon, West Wilts., Salisbury, Devizes, Warminster.
Affiliated Clubs : Westinghouse (Chippenham).
County Councillor : A. D. Ward, 26 Attwood Road, Salisbury.

WORCESTERSHIRE

President : Alderman S. H. Marshall, "Woodlands," 232 Malvern Road, Worcester. Tel. 24835.
Chairman : D. J. Moss, Flat 1, "Parkfields," Victoria Road, Great Malvern.
Hon. Secretary : I. R. Crickmer, 12 Cypress Street, Barbourne, Worc.
Hon. Treasurer : I. R. Crickmer (details as above).
Umpires Com. Sec.: I. R. Crickmer (details as above).
Magazine Secretary : I. R. Crickmer (details as above).
Press Officer : I. R. Crickmer (details as above).
Affiliated Leagues : Bromsgrove, Evesham, Halesowen, Hereford, Kidderminster, Malvern, Worcester.
Affiliated Clubs : None.
County Councillor : I. R. Crickmer (details as above).

YORKSHIRE

President : M. D. Shaffner, 4 Woodthorpe Drive, Sandal, Wakefield.
Chairman : H. Flinton, 10 Norland Avenue, Anlaby High Road, Hull. Tel. 52083.
Hon. Secretary : W. Mitton, 16 The Whins, Newby, Scarboro. Scalby202.
Hon. Treasurer : H. Litchfield, 38 Riversdale Road, Hull.
Umpires Committee Secretary : R. Balmford, 205 Park Avenue, Hull.
Press Officer : W. Mitton (details as above).
Affiliated Leagues : Barnsley, Batley Youth League, Bradford, Castleford & Pontefract, Dewsbury, Doncaster, Doncaster Youth, Halifax, Harrogate, Hull, Huddersfield, Leeds, Northallerton, North Yorks. & Mexboro Youth, Rotherham Works, Ryedale, Scarborough, Sheffield, Sheffield Works, Wakefield, York, York Youth.
Affiliated Clubs : Rawmarsh Congregational Youth Club.
County Councillor : W. Mitton (details as above).

DIRECTLY AFFILIATED CLUBS (at time of going to Press)

BARNES SECONDARY BOYS SCHOOL
A. J. F. Bates, Lonsdale Road, Barnes, S.W.13.

BRITISH STANDARDS INSTITUTION SOCIAL CLUB
Jenny Fogden, 2 Park Street, London, W.1.

CHANNY CLUB
James Nelson, 28 Crocus Close, Ipswich

FAILAND CLUB
R. F. Bowles, Dunvegan, Flaxbourton Road, Failand, Bristol.

GRIFFIN ATHLETIC CLUB
L. E. Potter, 12 Dulwich Village, West Dulwich, S.E.21. Townley 2330

GUTHLAXTON GRAMMAR SCHOOL CLUB
J. M. Spathaky, Guthlaxton, G. S. Station Road, Wigston, Leicester, Wigston 6361

HARWICH GRANGE CLUB
Allan Cooper, 87 Foxash Estate, Lawford, Nr. Manningtree, Ardleigh 400.

KINGSTON GRAMMAR SCHOOL CLUB
John M. Wright, 124 Rusthall Avenue, Bedford Park London, W.4. CHI 7485.

LENSBURY CLUB
J. M. March, Lensbury Club, c/o Shell Int.Pet.Co.Ltd., Shell Centre, London, S.E.1. WAT. 1234. Ext. 3194.

PULFORD SCHOOL CLUB
D. Harmer, 84 Brookland Drive, Leighton, Buzzard, Beds. L.B. 3578.

ST. LUKE'S YOUTH CLUB
Sydney A. Goose, The Cottage, 2 Jude Street, Canning Town, London, E.16. ALB. 2380 (day) ALB 2800 (evening)

TEDDINGTON TABLE TENNIS CLUB
C. Barraclough, 39 Endway, Tolworth, Surbiton, Surrey. Elmbridge 6168

WESTON-SUPER-MARE Y.M.C.A. CLUB
R. Philpott, 33 Palmer Street, Weston-Super-Mare, Somerset

WEST WIMBLEDON SOCIETY CLUB
Miss Suzette Lott, 37 Southdown Road, Wimbledon, London, S.W.20. WIM 5875

DIRECTLY AFFILIATED INDIVIDUALS (at time of going to Press)

Mrs. E. Phillips, 50 The Ridgeway, Golders Green, N.W.11.

Mrs. J. F. Reay, 7 Forfar Street, Fulwell, Sunderland, County Durham.

G. A. Cowen, 13 Bournewood Road, Orpington, Kent.

SPECIAL AFFILIATIONS (at time of going to Press)

BRADFORD ASSOCIATION OF YOUTH CLUBS
Organising Sec.: P. C. K. Andrewes, 4 Town Hall Square, Bradford 1.

NATIONAL COUNCIL OF Y.M.C.A.
Sec. for Physical Education : R. Brunswick, 112 Great Russell Street, W.C.1.

YORKSHIRE YOUTH ORGANISATIONS SPORTS ASSOCIATION
Hon. Sec.: F. L. Templeman, c/o C.C.P.R., 4 Albion Street, Leeds, 1.

MARKS & SPENCER SOCIAL SOCIETY
Sec.: A. E. Schulman, 47 Baker Street, London, W.1.

LONDON BOROUGH OF EALING ENTERTAINMENTS COMMITTEE
Entertainments Manager : J. A. Gilbey, Town Hall, Ealing.

THE LONDON FEDERATION OF BOYS' CLUBS
Assistant Gen. Sec.: P. F. N. Warner, 222 Blackfriars Road, Southwark, S.E.1.

LONDON ELECTRICITY SPORTS & SOCIAL ASSOCIATION
Sec./Treasurer : A. E. Knight, 287 Old Brompton Road, S.W.5.

THE CIVIL SERVICE T.T. ASSOCIATION
Hon. Gen. Sec./Treas.: 19 Fitzroy Gard., Upper Norwood, London, S.E.19.

LONDON BOROUGH OF BARKING
Show Sec.: Keith Lander, Civic Centre, Dagenham.

HOROLOGICAL SPORTS ASSOCIATION
Hon. Sec./Treas.: E. P. Groom, Rhodesia House, 57a Hatton Garden, London, E.C.1.

MIDDLESEX ASSOCIATION OF BOYS CLUBS
Organising Sec.: Lawrence Jones, Gillette Corner, Isleworth, Middlesex.

"EVENING ARGUS" TABLE TENNIS TOURNAMENT
Organising Sec.: P. Wales, 60 Nelson Road, West Worthing, Sussex.

BUCKINGHAMSHIRE ASSOCIATION OF YOUTH CLUBS
Organising Sec.: J. H. Irving, 17 Gt. Western Street, Aylesbury.

BUCKINGHAMSHIRE EDUCATION COMMITTEE

Deputy Education Officer : County Offices, Aylesbury, Bucks.

ESSEX SCHOOLS TABLE TENNIS ASSOCIATION

Sec.: G. N. Gurney, Guildhall Orchard, Great Bromley, Colchester.

THE ROYAL AIR FORCE T.T. ASSOCIATION

Hon. Treas.: Flt. Lt. A. R. Dovey, Officers Mess, R.A.F. Scampton, Lincs.

NATIONAL ASSOCIATION OF YOUTH CLUBS

Liaison Officer : Madeline Shipp, 30 Devonshire Street, London, W.1.

STEDFAST MAGAZINE

Editor : E. R. Staniford, 23 Western Road, Bletchley, Bucks.

SURREY COMET SCHOOLS TABLE TENNIS TOURNAMENT

General Organiser : John M. Wright, 124 Rusthall Ave., Bedford Park, London, W.4. or Common Room, Kingston Grammar School, London Road, Kingston-upon-Thames, Surrey.

THAMES-SIDE YOUTH LEADERS COUNCIL

Hon. Treasurer : A. Brett, 18 Lennox Road, Gravesend, Kent.

NATIONAL ASSOCIATION OF BOYS CLUBS

Advisor for Physical Recreation : Capt. S. Cole, 17 Bedford Square, London, W.C.1.

EAST CENTRAL YOUTH ORGANISATIONS COMMITTEE

Sec.: Mrs. A. Hall, 6 Newburn Crescent, Burnside Estate, Houghton-le-Spring, County Durham.

REGISTERED MEMBERS

(at time of going to Press)

Mary Austin, Pen y Bryn, Dirtham Lane, Effingham, Surrey. (E)
V. Barna, 28 Elm Park Court, Pinner, Middlesex.
G. Bathurst, 80 Appledore Crescent, Sidcup, Kent.
G. C. Binney, 73 Audley Road, South Yardley, Birmingham 33 (E)
C. Booth, 129, Hatfield Road, Bolton, Lancs.
J. M. Burtenshaw, 12 Park Road, Ashford, Kent (E)
Mrs. E. M. Carrington, 24 Worcester Gardens, Ilford, Essex. (E)
Jack Carrington, 24 Worcester Gardens, Ilford, Essex. (E)

L. A. Chatwin, 92 Sancroft Road, Spondon, Derby.
J. Corser, 22 Whippendell Road, Watford, Herts.
R. J. Crayden, 7 Grennell Road, Sutton, Surrey. (E)
D. O. Creamer, 20 Charles Street, Ealing, W.5. (E)
R. E. Etheridge, 1 Murray Avenue, Bromley, Kent.
A. J. Fisher, 95 Widmore Road, Bromley, Kent. (E)
B. G. Fretwell, 15a Blatchington Road, Hove 3, Sussex. (E)
S. Frohlick, 20 Rosemary Avenue, Blackpool.
T. W. Grant, 56 Bursledon Road, Bitterne, Southampton.
James, R. Green, 43-45, Lark Lane, Liverpool 17.
E. W. Harvey, 22 Sheenewood, Westwood Hill, Sydenham, S.E.26.
A. J. Hayward, 26 Limes Road, Tettenhall, Wolverhampton.
Dave Hilton, 255 Weald Drive, Furnade Green, Crawley, Sussex.
F. Holman, 66 Heathview Avenue, Crayford, Kent.
E. H. Howell, 7 Dorchester Road, Swindon, Wilts.
A. Hydes, 102 Standhill Crescent, New Lodge Estate, Barnsley.
R. Isbell, 63b Pahang Place, Baldwins Lane, Croyley Green, Rickmansworth, Hertfordshire.
Mike Johns, 60 Woollard Street, Waltham Abbey, Essex. (E)
Stan Johnson, 4 Rosebank Villas, High Street, Walthamstow, E.17.
Mrs. Ann Jones, 85 Westfield Road, Birmingham 15.
B. A. Kalinka, 71 Greenvale Road, Eltham, S.E.9.
L. Landry, Hall Flat, 96 Haverstock Hill, London, N.W.3. (E)
J. Leach, 10 Theydon Place, Epping, Essex.
W. Lucas, "Caerhays," 13 The Wold, Claverley, Nr. Wolverhampton.
R. A. Madin, 54 Morris Avenue, Newbold, Chesterfield, Derbyshire.
T. A. Morpeth, 59 Preston Avenue, North Shields, Northumberland.
Charles Stuart Morris, 119 Mansfield Road, Alfreton, Derbyshire (E)
Roger Charles Morris, 172 Buron Road, Birmingham 10. (E)
F. W. Moss, 62 Howarth Road, Abbey Wood, S.E.2.
P. H. Norman, 78 Laburnum Street, Hollingwood, Chesterfield, Derbyshire.
L. Pope, 64 Poplar Walk Road, London, S.E.24.
Alan Ransome, 21a, Church Lane, Ormesby, Middlesbrough, Yorkshire (E)
Mrs. Lesley Radford-Bell, 75 St. Peter's Close, Newbury Park, Essex. (E)
R. Ridge, 48 Olivet Road, Woodseats, Sheffield, 8.
Dennis F. L. Rowe, 23 Upper Belmont Road, St. Andrews, Bristol 7.
E. J. Rumjahn, "Richmond," 64 Church Road, Roby, Nr. Liverpool.
G. H. Savage, 9 Woodlands, Paddock Wood, Tonbridge, Kent.
T. E. Sears, 34 Station Road, Broxbourne, Hertfordshire.
K. Simmons, 89 Radnor Road, Horfield, Bristol 7.
A. W. C. Simons, 57 Hill View, Henleaze, Bristol.
P. Simpson, 30, Vesper Gate Mount, Leeds, 5. Yorks.
K. A. Simpson, 21 Purcell Road, Greenford, Middlesex.
G. A. Starke, 182 Morden Road, Merton Park, London, S.W. 19.
R. J. Stevens, 151 Haverling Gardens, Chadwell Heath, Romford, Essex. (E)
P. F. Taylor, 87 Burnell Avenue, Welling, Kent. (E)
P. Wales, "Laybrook," 60 Nelson Road, West Worthing, Sussex.
F. Wainwright, 30 Rossmore Road West, Ellesmere Port, Wirral, Cheshire.
A. Watling, 27 Heathside Avenue, Bexleyheath, Kent.
John Waterhouse, 61 Dean Road, Bitterne, Southampton.
Mrs. Mary Wright, 50 Wide Way, Mitcham, Surrey. (E)
G. R. Yates, 43 Knowsley Road, Smithills, Bolton, Lancs.

AFFILIATED LEAGUES

Name of League	Secretary	No. of Clubs	Memberships
ACTON 1 Warwick Road, London, W.5.	Miss E. Pratt	39	471
ALDERSHOT 5 Church Road, West. Farnborough, Hants.	Mrs. M. L. Smith	30	260
ANDOVER * 17 Highlands Road, Andover, Hants.	Mr. T. Vaill	17	130
ASHFORD 84 Mead Road, Willesborough Ashford, Kent	Mrs. J. Ross	32	205
AYCLIFFE 2 Alington Road, Newton Aycliffe, Darlington, Co. Durham.	Mr. J. A. Strickland	19	180
AYLESBURY 83 Old Stoke Road, Aylesbury, Bucks.	Mr. C. H. Thorne	26	300
BANBURY St. Mary's Lodge, Bloxham, Oxon.	Mr. D. Brownnett	24	160
BARKING 7 Linnets, Kingswood, Basildon, Essex.	Mr. R. L. Gallagher	28	240
BARKING YOUTH SERVICE Eastbury Youth Centre, Dawson Avenue, Barking, Essex.	Mrs. E. K. Tyne	10	72
BARNETS 115 Hadley Road, New Barnet, Herts.	Mr. V. Gibson	28	333
BARNLEY 6 Victoria Crescent West, Barnsley, Yorks.	Mr. G. W. Heath	26	300
BARROW 3 Kentmere Crescent, Barrow-in-Furness, Lancs.	Mr. J. W. Quint	28	280
BASILDON 22 Stansfield Road, Benfleet, Essex.	Mr. P. J. Pond	26	200
BASINGSTOKE 16 Vyne Road, Sherborne St. John Basingstoke, Hants.	Miss E. M. Barker	25	260
BATH South View, Longsplat, Kingsdown, Box, Wilts.	Mr. J. A. Butcher	26	429
BATLEY YOUTH 10 Horner Crescent, Carlinghow Lane, Batley, Yorks.	Mr. T. A. Clayton	13	105
BECCLES Red House Farm, Kirby Cane, Bungay, Suffolk	Mrs. B. L. Henderson	12	115
BECKENHAM 8 Manor Road, Beckenham Kent	Mrs. M. H. Corney	22	240
BEDFORD 49 Brickhill Drive, Bedford.	Mr. M. A. Barton	25	420
BERWICK-ON-TWEED * 11 Quay Walls, Berwick-on-Tweed.	Mr. L. Chappell	12	
BEXHILL * 41 Holliers Hill, Bexhill-on-Sea, Sussex.	Mr. R. Gillett	10	68
BILLERICAY 193 Hanging Hill Lane, Hutton, Brentwood, Essex.	Mr. J. W. Bleasby	25	280

Name of League	Secretary	No. of Clubs	Memberships
BIRMINGHAM 415 Moseley Road, Birmingham, 12.	Mr. M. Geirstein	170	1763
BISCOVEY 12 Trenovissick Road, Par, Cornwall.	Mr. D. W. Smith	8	75
BISHOP AUCKLAND * 3 Low Low Bridge Street, Bishop Auckland, Co. Durham.	Mr. W. Stephenson	21	190
BISHOPS STORTFORD * 11 Linkside Road, Bishops Stortford, Herts.	Mr. R. J. Dickman	6	58
BLACKBURN 24 Wythburn Avenue, Cherrytree, Blackburn, Lancs.	Mr. E. Greenwood	18	120
BLACKPOOL * 51 St. Davids Road North, St. Annes-on-Sea Lancs.	Mr. S. Johnson	32	360
BLETCHLEY 83 Whiteley Crescent, Bletchley, Bucks.	Mr. P. Wade	19	150
BOGNOR REGIS, CHICHESTER 30 Laburnham Grove, Bognor Regis, Sussex.	Mr. H. Frampton	20	256
BOLTON S.S.S. 43 Knowsley Road, Smithills, Bolton, Lancs.	Mr. G. R. Yates	36	400
BOREHAMWOOD * 189 Gateshead Road, Borehamwood, Herts.	Mr. K. Gooding	6	24
BOSTON 11 Priory Road, Fishtoft, Boston Lincs.	Mr. T. J. Freeston	16	140
BOURNEMOUTH 96 Headswell Avenue, Ensbury Park, Bournemouth, Hants.	Mrs. J. H. Coop	29	344
BRACKNELL 11 Nightingale Crescent, Bracknell, Berks.	Mr. M. J. Smythe	24	280
BRADFORD 68 Templars Way, Fairweather Green, Bradford 8.	Mr. A. Bowers	60	550
BRAINTREE 4 Chestnut Avenue, School Park, Goafeld, Essex.	Mrs. M. O. Warde	13	122
BRENTWOOD 37 Knights Way, Brentwood, Essex.	Mr. J. G. Smith	7	45
BRIDGNORTH * "Haworth" Highley, Nr. Kidderminster, Worcs.	Mr. H. E. Davis	11	60
BRIDGWATER 96 Gloucester Road, Bridgwater, Somerset.	Mr. E. Adams	13	100
BRIGHTON 34 Connaught Terrace, Hove, 3, Sussex.	Mr. W. G. Bradley	34	632
BRISTOL 148 Overndale Road, Downend, Bristol.	Mrs. J. L. Watts	83	100
BROMLEY 17 Carisbrooke Road, Bromley, Kent	Mr. A. W. Shipley	43	525
BROMSGROVE 5 Ednall Lane, Bromsgrove, Worcs.	Mr. L. Winterbourne	19	130
BURNLEY 3 Durban Grove, Burnley, Lancs.	Mr. J. A. White	42	161

Name of League	Secretary	No. of Clubs	Memberships
BURTON-ON-TRENT 97 Jordan Avenue, Streton, Burton-on-Trent, Staffs.	Mr. P. J. Goode	28	260
BURY 203 Rochdale Old Road, Bury Lancs.	Mr. J. G. Ackers	25	300
BYFLEET * 25 Queensway, Walton-on-Thames, Surrey.	Mr. M. Wood	14	145
CAMBRIDGE AND ISLE OF ELY 23 Orchard Way, Oakington, Cambs.	Mr. D. A. Fenton	40	300
CANTERBURY "Finlandia," Shalmsford Street, Chartham, Canterbury, Kent.	Mr. G. Youd	37	300
CARLISLE 24 Manor Road, Upperby, Carlisle, Cumberland	Mr. G. Bedford	26	164
CASTLEFORD, PONTREFRAC 13 The Booths, Pontefract, Yorks.	Mr. C. Darley, Jun.	11	80
CENTRAL Howard Bureau, 1 Excel House, Excel Court, Whitcombe Street, London, W.C.2.	Mr. A. S. Howard	46	500
CENTRAL SOMERSET 13 Fielding Road, Street, Somerset.	Mr. C. J. Frost	10	65
CHALFONTS * 54 Langley Road, Slough, Bucks.	Mr. T. Cresswell		
CHEADLE (Staffs.) * Morrillow Heath, Leigh, Stoke-on-Trent, Staffs.	Mr. W. A. Walters	10	70
CHELMSFORD 29 Rosebery Road, Chelmsford, Essex.	Mrs. G. M. Levett	30	500
CHELTHENHAM 10 Paddocks Lane, Cheltenham, Glos.	Mr. S. Turner	27	250
CHESHUNT 3 The Gladway, Waltham Abbey, Essex.	Mr. A. W. Cornwell	22	275
CHESTER 22 Ullswater Crescent, Plas Newton, Chester.	Mr. B. Butterfield	22	200
CHESTERFIELD 51 Walton Road, Chesterfield, Derbyshire.	Mr. D. Atkinson	41	480
CHILTERN 175 Waterside, Chesham, Bucks.	Mr. R. K. Brown	24	200
CITY OF LONDON Secondary's Office, Guildhall, London, E.C.2.	Mr. A. J. Page	18	119
CLACTON 2a Steele House, High Street, Dovercourt, Essex.	Mrs. B. Jacobs	13	
CLAY CROSS YOUTH * 37 St. Mary's Gate, Chesterfield, Derbyshire.	Mr. E. Joyce	10	140
COALVILLE * 194 Battam Road, Ellistown, Leicestershire.	Mr. N. E. Robinson	8	65
COLCHESTER 16 Browning Close, Colchester, Essex.	Mr. D. Baillie	26	180
COVENTRY * 31 Woodlands Road, Kenilworth, Warwicks.	Mr. M. G. Abbott	43	600

Name of League	Secretary	No. of Clubs	Memberships
CRAWLEY 17 Duncton Close, Ifield, Crawley, Sussex.	Mr. W. G. Brinkley	27	350
CREWE 41 Ford Lane, Crewe, Cheshire.	Mr. N. Whittaker	19	108
CROMER 65 Links Avenue, Cromer, Norfolk	Mr. D. J. Hann	18	170
CROYDON 6 Court Avenue, Old Coulsdon, Surrey.	Mr. K. C. Joyes	25	250
CROYDON BUSINESS HOUSES * 22 Beverley Road, Whyteleafe, Surrey.	Mr. J. E. Zenthon	26	225
DAGENHAM 173 Alma Avenue, Hornchurch, Essex.	Miss M. E. Harden	19	200
DAGENHAM CHURCH 43 Chaplin Road, Dagenham, Essex.	Mr. J. Harris	9	100
DARLSTON, WEDNESBURY 29 Common Road, Wombourne, Wolverhampton.	Mr. W. J. Robinson	24	200
DARLINGTON 129 Durham Road, Stockton-on-Tees, Darlington, Co. Durham.	Mr. T. S. Harker	15	125
DARWEN "Temple," Blacksnape, Nr. Darwen, Lancs.	Mr. J. J. Davies	11	100
DEAL Coondahs, Herschell Road, Walmer, Deal, Kent	Mr. J. W. Martin	11	72
DERBY 142 Enfield Road, Derby.	Mr. W. A. Reeves	35	260
DEREHAM * Shrublands, Westfield Road, Dereham, Norfolk.	Mr. P. J. Fern	14	127
DEVIZES * Manor Farm Cottage, Etchilhampton, Devizes.	Mr. H. L. House	12	75
DEWSBURY 11 Anne Street, Batley, Yorks.	Mr. D. Leach	29	260
DIDCOT 76 Edwin Road, Didcot, Berks.	Mr. B. Slade	14	100
DONCASTER 38 Ings Way, Arksey, Doncaster, Yorkshire.	Mr. D. Pilling	26	144
DONCASTER YOUTH 15 Armitage Road, Balby, Doncaster, Yorkshire	Mr. H. Dainty	10	70
DORKING 25 The Avenue, Brockham, Betchworth, Surrey.	Mr. A. J. Stringle	19	175
DORCHESTER 5 Wainwright Close, Coombe Valley, Weymouth, Dorset.	Mr. D. A. Dolphin	18	145
DOVER * Tree Tops, Cowper Covert, River, Dover, Kent.	Mr. R. Howard	9	70
DUDLEY TEMPERANCE * 26 Springfield Crescent, Dudley, Worcestershire	Miss V. M. Royal	24	180

Name of League	Secretary	No. of Clubs	Memberships
DUKERIES 299 Gateford Road, Worksop.	Mr. P. A. Hull	22	171
DULWICH 246 Norbury Avenue, London, S.W.16.	Mr. J. Newson	36	210
DUNSTABLE 31 Drury Lane, Houghton Regis, Dunstable, Beds.	Mr. A. Clarke	17	206
DURHAM * 10 Cleves Cottages, Duncombe, Ferryhill, Durham.	Mr. G. Dent	12	
EAST ANGLIAN 5 New North Road, Attleborough, Norfolk.	Mr. D. Simpson		
EASTBOURNE 6 North Street, Hailsham, Sussex.	Mr. R. Kitcher	23	286
EAST LONDON 71 Friars Road, East Ham, London, E.6.	Mr. D. G. Carter	25	330
ECKINGTON YOUTH Frechville County Youth Club, Fox Lane, Frechville, Sheffield, Yorkshire.	Mr. J. Bryant	7	90
EASTWOOD 41 Kniveton Park, Ilkeston, Derbyshire.	Mr. D. W. Beardsley	15	160
EDWASCA 73 Kingsway, Ware, Herts.	Mr. F. R. Gash	23	275
ELLESMERE PORT 19 Rossmore Gardens, Little Sutton, Cheshire.	Mr. V. H. Daynes		
ELY 35a High Street, Ely, Cambs.	Mr. D. G. Stephen	8	65
EVESHAM * 25 The Leys, Evesham, Worcestershire.	Mr. M. A. Kirby	12	105
EXETER 23 Rugby Road, Exeter, Devon.	Mrs. K. Le Milliere	90	360
EXMOUTH 6 Orchard Close, Exmouth, Devon.	Mr. K. J. Harris	12	89
FAKENHAM 47 Norwich Road, Fakenham, Norfolk.	Mr. W. Bird	15	108
FARNWORTH * 39 Kildare Street, Farnworth, Bolton, Lancs.	Mr. C. Ridings	12	
FILM RENTERS Essoldo Circuit (Control) Ltd., 1/5, Jermyn Str., London, S.W.1.	Mrs. S. Ashdown		
FOLKESTONE 14 Julian Road, Folkestone, Kent	Mr. F. Betts	19	250
GAINSBOROUGH * 31 Gainsborough Road, Scotter, Gainsborough, Lincs.	Mr. P. Westcott	7	85
GLOUCESTER 8 South Close, Gloucester.	Mr. K. Simmons	24	272
GOSPORT 34 High Street, Lee-on-Solent, Hants.	Mr. B. D. George	19	254
GRANTHAM * 2 Denton Avenue, Grantham, Lincs.	Mr. G. Lyon	15	140

Name of League	Secretary	No. of Clubs	Memberships
GRAVESEND * 38 Havisham Road, Chalk, Nr. Gravesend.	Miss J. A. Pennell	20	205
GREAT YARMOUTH * 5 Orde Avenue, Gorleston-on-Sea, Gt. Yarmouth, Norfolk.	Mr. D. Jenkinson	28	160
GRIMSBY 6 Winston Avenue, Grimsby, Lincs.	Mr. C. A. Hackford	30	600
GUILDFORD 77 Addison Road, Guildford, Surrey.	Mr. Wm. Marriott	34	410
HALESOWEN * 12 Coldstream Drive, Rectory Drive, Rectory Fields, Wordsley, Stourbridge, Worcs.	Mr. P. C. Bird	12	89
HALIFAX 13 First Avenue, Manor Drive, Halifax, Yorkshire.	Mr. J. R. Hargrave	20	212
HARLOW 28 Sharpecroft, Harlow, Essex.	Miss J. Langston	32	320
HARROGATE 22 Kingsley Drive, Harrogate, Yorkshire.	Mr. M. Wild	27	272
HARTLEPOOLS 161 Park Road, West Hartlepool, Co. Durham.	Mr. T. Snowdon	22	250
HASTINGS 59 Parker Road, Hastings, Sussex.	Mrs. M. Beane	18	250
HAYWARDS HEATH * Camwell, 20 Malthouse Lane, Burgess Hill, Sussex.	Mrs. N. Copeland	15	152
HEATHFIELD Heathfield Youth Centre, High Street, Heathfield, Sussex.	Mrs. K. S. Kent		
HEMEL HEMPSTEAD 40 Morris Way, London Colney, St. Albans, Herts.	Mrs. J. O. Wildman	30	320
HEREFORD 27 Brockington Drive, Hereford.	Mr. V. A. Lawrence	29	325
HERTFORD 33 The Avenue, Bengoe, Hertford.	Mr. K. Langfield	14	125
HEXHAM * 19 Priestlands Lane, Hexham, Northumberland.	Mr. R. Murgatroyd	12	118
HIGH WYCOMBE 83 Adelaide Road, High Wycombe, Bucks.	Mr. D. E. Norton	47	560
HORWICH 339 Chorley New Road, Horwich, Lancs.	Mr. J. H. Parr	6	50
HUDDERSFIELD 79 Thornhill Road, Rastrick, Huddersfield, Yorks.	Mr. D. T. Barber	53	476
HULL 34 Dover Street, Hull Yorks.	Mr. A. M. Ross	49	700
HUNTS CENTRAL 16 Parkway, St. Ives, Hunts.	Mrs. C. Arnold	9	90
HYDE 132 Joel Lane, Hyde, Cheshire.	Mr. A. Jolly	21	244
ILFORD 47 Birkbeck Road, Barkingside, Ilford, Essex.	Mr. D. C. Dunand	40	479

Name of League	Secretary	No. of Clubs	Memberships
INSURANCE OFFICES	Mr. I. D. Crane Flat 1, Cranleigh House, 6 Overbury Avenue, Beckenham, Kent.	48	800
IPSWICH	Mr. P. D. Mann 7 Fuchsia Lane, Ipswich, Suffolk.	41	342
ISLE OF THANET	Mr. C. A. Burden "Malvern," 5 Minster Road, Ramsgate, Kent.	15	150
ISLE OF WHITE	Mr. N. J. Badcock 48 Green Lane, Shanklin, Isle of Wight.	16	144
KETTERING	Miss M. Coleman * 53 Laburnum Crescent, Kettering, Northants.	13	94
KIDDERMINSTER	Mrs. E. Tasker 5 Derwent Avenue, Stourport-on-Severn, Worcs.	22	150
KINGS LYNN	Mr. M. G. Ebbs, "Glen View," Station Road, Roydon, Kings Lynn, Norfolk.	10	30
LANCASTER, MORECAMBE	Mr. T. E. Richardson * 25 Market Street, Carnforth, Lancs.	14	130
LEAMINGTON	Mrs. M. E. Evans 17 Gaveston Road, Leamington Spa, Warwicks.	41	325
LEATHERHEAD, EPSOM	Mr. A. B. Fisher 10 Roundwood View, Banstead, Surrey.	26	228
LEEDS	Mr. N. Rushton 7 Luttrell Place, Leeds 16.	62	725
LEEDS SCHOOLS	Mr. A. Winn * 15 Hollyshaw Terrace, Whitkirk, Leeds 15.		
LEEK	Mr. B. K. Mansfield * 54 Nab Hill Avenue, Leek, Staffs.	8	30
LEICESTER	Mr. K. Needham * 34 Marston Avenue, South Wigston, Leics.	62	698
LEIGHTON BUZZARD	Mr. W. H. H. Read * 174 Richmond Road, Leighton Buzzard, Beds.	16	176
LEWES	Mrs. P. Fellows, * 41a Cliffe High Street, Lewes, Sussex.	13	110
LINCOLN	Miss J. Scott 34 Bridge Street, Saxilby, Lincoln.	29	328
LIVERPOOL	Mr. J. C. McKim 14 Greenhill Avenue, Liverpool 18.	43	734
LIVERPOOL BUSINESS HOUSES	Mr. N. Heavyside * 4 Layton Road, Liverpool 25.	43	500
LONDON BANKS	Mr. T. J. Catherall, National Prov. Bank, Ltd., 137 City Road, London, E.C.1.	44	930
LONDON BUSINESS HOUSES	Mr. L. C. T. Bulport * 26 Brackenwood Road, St. John's Woking, Surrey.	103	

Name of League	Secretary	No. of Clubs	Memberships
LONDON BORO' OF SUTTON YOUTH LEAGUE	Mr. M. W. J. Kercher 69 Titchfield Road, Carshalton, Surrey.	11	
LONDON BREWERIES	Mr. N. H. Weston * Whitbread & Co. Ltd., The Brewery, Chiswell St. London E.C.1.	73	1300
LONDON CIVIL SERVICE	Mr. P. J. Lynn 34 Hanover Road, Willesden, London, N.W.10.	16	150
LOUGHBOROUGH	Mr. R. Billson 20 Gracedieu Road, Loughborough, Leics.	16	115
LOUTH	Mr. K. W. Dewar 133 Eastgate, Louth, Lincs.	20	200
LOWESTOFT	Mr. H. P. Gage * 24 Suffolk Road, Lowestoft, Suffolk.	6	43
LUDLOW	Mr. M. J. Baker * 32 Grange Road, Bishops Castle, Ludlow, Shrops.	36	436
LUTON	Mr. C. J. Rowley * 7 Holland Road, Luton, Beds.	10	95
LYTHAM ST. ANNES	Mr. J. G. Worden * 7 Beverley Road North, Lytham St. Annes, Lancs.	17	160
MACCLESFIELD	Mr. W. Tarbett * 11 Bridge Street, Macclesfield, Cheshire.	20	120
MAIDENHEAD	Mr. J. Stewart * 4 Cromwell Road, Maidenhead, Berks.	28	300
MAIDSTONE	Mr. M. Hibbin 9 Alexandra Street, Maidstone, Kent.		
MALVERN	Mr. K. Foresheew * Bryn Bella, Colwall Green, Nr. Malvern, Worcs.	90	1150
MANCHESTER	Mr. L. W. Jones 261 Mauldeth Road, Burnage, Manchester 19.		
MANCHESTER BANKS AND INS.	Mr. H. Finn * 87 Osborne Street, Stourport, Cheshire.	22	250
MANCHESTER FURTHER EDUCATION SPORTS LEAGUE	Mr. W. Kay * Education Offices, Deansgate, Manchester 3.	31	250
MANSFIELD	Mr. K. Bloomfield 26 Park Side, Huthwaite, Sutton-in-Ashfield, Notts.	43	300
MATLOCK	Mr. C. A. Gilbert * Hope Cottage, Little Longstone, Nr. Bakewell, Derbyshire.	12	104
MEDWAY TOWNS	Mr. J. Tulloch * 2 Lyminge Close, Gillingham, Kent.	37	330
MELTON MOWBRAY	Mr. and Mrs. J. Brunning 28 Highfield Avenue, Melton Mowbray, Leics.	14	118
MID-CHESHIRE	Mr. M. J. Dale 32 Townsend Road, Lostock Gralam, Northwich, Cheshire.	12	121
MIDDLESBROUGH	Mr. M. Keenan 23 Westfield Road, Normanby, Middlesbrough, Yorks.	25	350

Name of League	Secretary	No. of Clubs	Memberships
MURTON * 2 Victoria Terr., Murton, Seaham, Co. Durham.	Mr. T. Porter	7	44
NALGO (MET. DIST.) * Morden Hall, Morden Hall Road, London, S.W.19.	Mr. F. G. Heath	13	60
NELSON Marsden Hall, Marsden Park, Nelson, Lancs.	Mr. M. J. Wrigley	22	130
NEWARK * 18 Clumber Avenue, Newark, Notts.	Mr. D. Wright	15	100
NEWBURY "Fortuna," 29 Croft Road, Newbury, Berks.	Mr. A. A. J. Mosson	37	375
NEWCASTLE-UNDER-LYNE YOUTH * 9 Buckmaster Ave., Newcastle-under-Lyme, Staffs.	Mr. R. H. Adams	10	60
NEWHAM YOUTH SPORTS ASSOCIATION 28 South Esk Road, Forest Gate, London E.7.	Miss D. H. Baxter	15	
NEWTON-LE-WILLOWS * 11 Fullwood Road, Lowton, Nr. Warrington, Lancs.	Mr. G. Westhead	10	36
NON-CONFORMIST CHURCHES 22 Willow Close, Flackwell Heath, Bucks.	Mr. R. Gallaher	4	36
NORTH ACTON 124 Rusthall Ave., Bedford Park, London, W.4.	Mr. J. M. Wright	34	400
NORTHALLERTON 11 Millfield Crescent, Northallerton, Yorks.	Mr. C. K. Palmer	19	150
NORTHAMPTON 47 Cotswold Avenue, Northampton.	Mr. R. W. Allen	36	480
NORTH EAST SUMMER 21a Church Lane, Ormesby, Middlesbrough, Yorks.	Mr. A. Ransome		
NORTH HERTS 64 Baldock Road, Letchworth, Herts.	Mr. B. A. English	40	280
NORTHMET * 79 Mount Pleasant Road, London N.17.	Mr. S. R. Hoddy	7	30
NORTH MIDDLESEX * 85 Moray Road, London, N.4.	Mr. R. T. Saines	55	800
NORTH STAFFS INDUSTRIES SPORTS 22 High Street, May Bank, Newcastle, Staffs.	Mr. N. Spragg	9	49
NORTHUMBERLAND 3 Houxty Road, South Wellfield, Whitley Bay, Northumberland.	Mr. D. M. Robson	101	692
NORTH WALSHAM * 8 Grange Court, North Walsham Norfolk.	Mr. A. A. Hales	10	30
NORTH WEST KENT 22 St. Michaels Road, Welling, Kent.	Mr. T. Daniel	37	530
NORTHWICH METHS. 17 Solvay Road, Winnington, Northwich, Cheshire.	Mr. A. Siddall	4	30
NORTH YORKS 90 Grange Road, Middlesbrough, Yorks.	Mr. R. E. Ransome	8	40

Name of League	Secretary	No. of Clubs	Memberships
NORWICH The Homestead, 16 Branksome Close, Eaton, Norwich, Norfolk.	Mr. H. E. Betts	56	650
NOTTINGHAM 32 Orchard Drive, Calverton, Nottingham.	Mr. D. F. Page	77	650
NUNEATON 43 Hinckley Road, Nuneaton, Warwicks.	Mr. A. Whitmore	31	290
OLDHAM * 18 Carlton Avenue, Oldham, Lancs.	Mr. K. J. Jump	30	286
OSWESTRY * Lidderdale, Middleton Road, Oswestry, Salop.	Mr. G. Pryce Jones	17	136
OXFORD 39 Sterling Road, Kidlington, Oxford.	Mr. A. R. Hughes	41	430
PETERBOROUGH 47 Scotney Street, Peterborough, Northants.	Miss P. Tate	18	138
PHILADELPHIA "Wilkommen," Mount Pleasant, Houghton-le-Spring, Co. Durham.	Mr. F. J. Inch	9	75
PLYMOUTH 20 Rectory Road, Stoke, Plymouth, Devon.	Mr. T. G. Anson	50	479
POOLE * 3 Penn Hill Avenue, Parkstone, Dorset.	Mrs. B. K. Appleby	12	112
PORTSMOUTH "Wicksmead," Penn Common, Bramshaw, Lyndhurst, Hants.	Mrs. J. Stannard	36	300
POTTERIES 157 Blurton Road, Fenton, Stoke-on-Trent, Staffs.	Mrs. D. M. Davies	52	500
PRESTON "Burn-lea," 20 St. David's Road, South, St. Annes-on-Sea, Lytham St. Annes, Lancs.	Mr. C. G. Stoke	32	350
PRINTING AND PUBLISHING AND ALLIED TRADES LEAGUE * 68 Effra Parade, Brixton, London, S.W.2.	Mr. L. C. Garland	24	200
RADCLIFFE AND PRESTWICH * 12a The Meadows, Prestwich, Nr. Manch. Lancs.	Miss R. Ramwell	38	462
READING 9 Duncan Road, Woodley, Reading, Berks.	Mr. A. M. Lijinsky	40	496
REIGATE, REDHILL 14 Vogan Close, Reigate, Surrey.	Mrs. M. E. Smith	16	163
ROCHDALE * 12 Gordon Street, Newhey, Nr. Rochdale, Lancs.	Mr. D. Grime	18	148
ROMFORD 18 Sylvan Avenue, Hornchurch, Essex.	Mrs. P. Lauder	24	325
ROTHERHAM WORKS 77 Broadway East, Rotherham, Yorks.	Mr. J. Platts	20	110
RYEDALE 18 The Croft, Beadlam, Nawton, York.	Mr. T. W. B. Bolam	7	30
ST. ALBANS * 10 Breakspear Ave., St. Albans, Herts.	Mr. C. B. Cubitt	25	285

Name of League	Secretary	No. of Clubs	Memberships
ST. HELENS	Mr. J. Rimmer	37	379
* 19 Osborne Road, Eccleston, St. Helens, Lancs.			
ST. NEOTS	Mr. A. C. Olver	14	130
60 Avenue Road, St. Neots, Hunts.			
SADDLEWORTH	Mr. M. A. Foley	8	68
* 8 Oldham Road, Uppermill, Nr. Oldham, Lancs.			
SALE	Mr. F. B. R. Nield	17	150
335 Manor Avenue, Sale, Cheshire.			
SALFORD, ECCLES	Mr. J. Barlow	24	270
26 Francis Street, Monton, Eccles, Manchester.			
SALISBURY	Mr. J. Young-Evans	27	225
* 4 Attwood Road, Salisbury, Wilts.			
SCARBOROUGH	Mr. W. Mitton	22	120
16 The Whins, Newby, Scarborough, Yorks.			
SCUNTHORPE	Mr. H. M. Day	15	162
Holywell Villa, Station Road, Keadby, Scunthorpe, Lincs.			
SHEFFIELD	Mrs. R. Whalley	60	510
94 Baslow Road, Totley Rise, Sheffield, Yorks.			
SHEFFIELD WORKS SPORTS	Mr. P. M. Turner	52	750
6 Holtwood Road, Sheffield 4, Yorks.			
SHREWSBURY	Mr. J. C. Stannett	29	237
74 Mount Pleasant Road, Shrewsbury, Shrops.			
SILVERTOWN	Mrs. D. J. Thomas	12	76
3 Odessa Court, Forest Gate, London E.7.			
SITTINGBOURNE	Mr. F. G. Mannooch	24	320
216 Park Road, Sittingbourne, Kent.			
SKEGNESS	Mr. T. C. Matthews	7	32
1 Mill Hill Bungalow, Ashington End, Skegness, Lincs.			
SLOUGH	Mr. I. White	15	220
8 Parkland Avenue, Slough, Bucks.			
SOMERSET ASSOCIATION OF YOUTH CLUBS	Mary Miller (Org. Sec.)		
15 Friar Street, Bridgwater, Somerset.			
SOUTHAMPTON	Mr. M. Greatrex	50	650
38 Cecil Avenue, Shirley, Southampton, Hants.			
SOUTH DEVON AND TORBAY	Mrs. P. Addison	13	
* c/o Torbay Chalet Hotel, Marldon, Devon.			
SOUTH-EAST HANTS	Mrs. T. Clay	17	190
25 Western Road, Havant, Hants.			
SOUTHEND	Mr. M. D. Watts	36	450
25 Church Green, Sycamore Way, Canewdon, Essex.			
SOUTH LONDON	Mr. R. G. Parsons	12	100
138 Inchmery Road, Catford, London, S.E.6.			
SOUTHPORT	Mrs. G. F. Tebble	14	116
70 Grange Road, Southport, Lancs.			

Name of League	Secretary	No. of Clubs	Memberships
SOUTH SHIELDS	Mr. G. O. Pearce	13	108
"Orkney," 55 East Boldon Road, Cleadon Village South Shields, Sunderland.			
SOUTHWARK	Mr. C. H. Bennett	22	217
94 Aubert Court, Avenell Road, London N.5.			
SOUTH-WEST MIDDLESEX	Mr. R. Stevens	33	305
* 40 Heath Road, Twickenham, Middlesex.			
SPALDING	Mrs. M. Burgess	17	95
* "Roma," 6 Fennell Road, Pinchbeck, Spalding, Lincs.			
STAFFORD	Mr. T. T. Tyler	18	100
10 Field Crescent, Derrington, Nr. Stafford.			
STAINES	Mrs. J. M. Gresswell	27	350
3 Fawns Manor Road, Bedfont, Middlesex.			
STANLEY	Mr. T. Wade	13	65
* 12 Jane Street, South Moor, Stanley, Co. Durham.			
STAVELEY YOUTH SERVICE LEAGUE	Mr. E. Joyce	11	140
* 37 St. Mary's Gate, Chesterfield, Derbyshire.			
STOCKPORT	Mr. F. Thomas	36	340
12 Williamson Street, Reddish, Stockport, Cheshire			
STOCKPORT Y.O.C.	Mr. A. Spedding	23	141
7 Ambleside Road, Reddish, Stockport, Cheshire.			
STOCKTON	Mr. C. Davison	18	
* 1 Burnside Court, Hartburn, Stockton-on-Tees.			
STOKE-ON-TRENT YOUTH	Mrs. E. M. Annear	21	
* Mitchell Memorial Youth Centre, Broad Street, Hanley, Stoke-on-Trent.			
STONE	Mr. R. Harvey	14	120
49 Raleigh Hall, Eccleshall, Stafford.			
STOWMARKET	Mr. B. C. Buckle	10	85
45 Poplar Hill, Stowmarket, Suffolk.			
STROUD	Mr. L. J. Smith	19	125
Endfield, Cowle Road, Stroud, Glos.			
SUFFOLK NALGO	Mr. A. N. Howes	8	60
* 74 Beechcroft Road, Ipswich, Suffolk.			
SUNDERLAND	Mr. E. Reay	40	380
* 7 Forfar Street, Fulwell, Sunderland, Co. Durham.			
SUNDERLAND Y.O.C.	Mr. T. Proctor	8	24
2 Mowbray Road, Sunderland, Co. Durham.			
SUTTON	Mr. M. J. Twohill	18	160
29 Radcliffe Gardens, Carshalton Beeches, Surrey.			
SWADLINCOTE YOUTH	Miss G. Leech	8	24
* 74 Bernard Street, Woodville, Nr. Burton-on-Trent.			
SWINDON	Mr. G. Turnbull	47	650
139 Grange Drive, Stratton St. Margaret, Swindon, Wilts.			

Name of League	Secretary	No. of Clubs	Memberships
TAMWORTH	Mrs. P. Storr	16	80
"Remarren," 33 Clifford Street, Glascote, Tamworth, Staffs.			
TAUNTON	Mr. K. Poole		
* 37 Wheatley Crescent, Taunton, Somerset.			
TAXES	Mr. R. Spittle	28	220
159 Sutton Common Road, Sutton, Surrey.			
THAMES VALLEY	Mr. A. Hatchett	39	471
30b The Byeways, Surbiton, Surrey.			
THURROCK	Mrs. J. L. Benson	25	200
28 Overcliff Road, Grays, Essex.			
TIVERTON	Mr. R. Hillman,	7	70
* Southmead, Park Road, Tiverton, Devon.			
TONBRIDGE	Mr. B. Rolls	21	250
28 Sullivan Road, Tonbridge, Kent.			
TRAVEL TRADE	Mr. R. A. Russell	23	220
c/o Blue Star Line Ltd., Albion House, Leadenhall Str., London, E.C.3.			
TRENT VALLEY YOUTH	Mr. H. Dove	14	80
* Hatton County Youth Centre, Station Road, Hatton, Derby.			
TUNBRIDGE WELLS	Mr. H. Binfield	19	250
16 Albion Road, Tunbridge Wells, Kent.			
URMSTON	Mr. H. Traynor	15	144
* 18 Rothiemay Road, Flixton, Nr. Manchester.			
UXBRIDGE	Mr. H. T. Edwards	27	240
16 Dawley Avenue, Hillingdon, Uxbridge, Middlesex.			
WAKEFIELD	Mr. C. Davison	21	190
18 The Shutt, Norbury, Nr. Wakefield, Yorks.			
WALSALL	Mr. D. J. Pritchard	39	400
139 Dickinson Drive, Walsall, Staffs.			
WALTHAMSTOW	Mr. C. A. C. Ford	41	350
9 Wingfield Road, Walthamstow, London E.17.			
WALTHAMSTOW YOUTH	Mr. R. White	14	69
* 346 Priory Court, Walthamstow, London, E.17.			
WANDSWORTH	Mr. J. S. Forrest	51	60
61c Radbourne Road, Balham, London S.W.12.			
WARMINSTER	Mr. P. P. Owen	7	45
39 St. John's Road, Warminster, Wilts.			
WARRINGTON	Mr. D. Dean	22	330
* 119 Stocks Lane, Penketh, Warrington, Lancs.			
WATFORD	Mr. P. J. Shoxell	42	500
19 Gade Avenue, Watford, Herts.			
WELLINGBOROUGH	Mr. G. Brown	25	250
199 Mill Road, Wellingborough, Northants.			
WELLINGTON	Mr. D. Duddell	20	195
8 Arden Avenue, Dawley, Shropshire. 8			

Name of League	Secretary	No. of Clubs	Memberships
WELWYN GARDEN CITY AND HATFIELD	Mr. P. B. Lindley	19	180
13 The Jinnings, Welwyn Garden City, Herts.			
WEMBLEY AND HARROW	Mrs. A. E. Reeve	49	689
8 Thornton Grove, Hatch End, Middlesex.			
WEST BROMWICH	Mr. A. A. Wall	47	256
242 Oak Road, West Bromwich, Staffs.			
WEST CORNWALL	Mr. A. R. Bunt	24	200
46 Carclew Street, Truro, Cornwall.			
WEST ESSEX	Mr. T. K. Hale	16	210
48 Chestnut Avenue, Buckhurst Hill, Essex.			
WEST LONDON	Mr. A. C. Wiggins	20	
* 273 Christchurch Ave., Wealdstone, Harrow, Middlesex.			
WEST WILTS	Mr. W. J. Cleveland	26	207
55 Blair Road, Trowbridge, Wilts.			
WEYMOUTH	Mr. F. J. Dallimore	12	110
457 Dorchester Road, Weymouth, Dorset.			
WHITCHURCH	Miss J. Clay	10	80
* 54 Talbot Street, Whitchurch, Salop.			
WHITEHAVEN	Mr. R. Rigg	32	200
1 Park View, Whitehaven, Cumberland.			
WIDNES	Mr. S. Woodward,	28	300
110 Liverpool Road, Widnes, Lancs.			
WIGAN	Mr. J. Bradley	19	107
2 Norfolk Street, Springfield, Wigan, Lancs.			
WILLESDEN	Mr. R. S. Webb	39	550
2 Bramshill Road, Harlesden, London, N.W.10.			
WIMBOURNE	Mr. L. Pearce	8	60
20 Charborough Road, Broadstone, Dorset.			
WINCHESTER	Mr. G. Butcher	16	87
Unity Cottage, London Road, Kings Worthy, Nr. Winchester, Hants.			
WIRRAL	Mr. R. S. Boyles	23	200
545 Old Chester Road, Rock Ferry, Birkenhead, Cheshire.			
WISBECH	Mr. B. H. Tolliday	24	160
75 Stow Road, Wisbech, Cambs.			
WITNEY	Mr. K. P. Smith	9	70
* 33 Stanton Harcourt Road, Newland, Witney, Oxon.			
WOLVERHAMPTON	Mr. B. H. Francis	44	515
6 North Road, Wolverhampton, Staffs.			
WOODBIDGE	Mr. D. Burnside	18	167
* 76 Edwin Avenue, Woodbridge, Suffolk.			
WOOLWICH	Mr. G. J. Reid	32	330
114 Birdbrook Rd., Kidbrook Rd., London, S.E.3.			
WORCESTER	Mr. T. W. Lee	33	310
13 Astwood Road, Worcester.			

Name of League	Secretary	No. of Clubs	Memberships
WORTHING	Mr. M. D. Oldham	16	175
25 Offington Gardens, Worthing, Sussex.			
WYMONDHAM	Mr. W. Kerrison	12	82
* 33 Friarscroft Lane, Wymondham, Norfolk.			
YEOVIL	Mr. K. F. Palmer	19	150
12 Barton Gardens, Sherborne, Dorset.			
YORK	Mr. A. Postlethwaite	30	375
115 Manor Drive, Acomb, York.			

* Denotes last season's information

TABLE TENNIS NEWS

THE OFFICIAL MAGAZINE OF THE E.T.T.A.
Published October to May on 10th day of each month

Postal Subscriptions

10/- for eight issues (post free)

To MACAULAY'S ADVERTISING SERVICES
5-7 City Gordon Row, City Road, London, N.1.
Phone CLE 8777

Editor

GEORGE R. YATES
43 Knowsley Road, Smithills, Bolton, Lancs
Phone Bolton 42223

Advertising

KEN MATHEWS
11 South Norwood Hill, London, S.E.25.
Phone LIV. 1918

Circulation

LOUIS HOFFMAN
180 Brick Lane, London, E.1.
Phone SHO 7391

Special Discount to Counties

CUMULATIVE SUPPLEMENT

TO

Handbook Part 1

1966-67

Note: Handbook Part 1 was published in season 1964-65

RULES
(As revised for Season 1966/67)

NAME

- 1 The Association shall be called the English Table Tennis Association.
- 2 The Association shall be affiliated to the International Table Tennis Federation.

OBJECTS

- 3 The objects of the Association shall be as follows :—
 - (a) To lay down and secure the adoption of uniform laws of the game of Table Tennis in England and to act as the legislative Authority.
 - (b) To decide all doubtful or disputed questions as to the laws and all matters relating to the game in England.
 - (c) To act as the sole controlling and governing body of the game of Table Tennis in England.
 - (d) To apply solely to the promotion of the foregoing objects all income and property of the Association from whatever source derived.

DEFINITIONS

- 4 (a) The following words and phrases shall throughout the Rules and Regulations of the Association have the meaning assigned to them by this Rule.
 - (1) affiliated club : a club in membership of a Local League.
 - (2) affiliated player : any player who is either a Directly Affiliated Individual or in membership of an affiliated body.
 - (3) Directly Affiliated Club : a club which pays an affiliation fee direct to the E.T.T.A., whether or not also in membership of a Local League.
 - (4) Directly Affiliated Individual : an individual who pays an affiliation fee direct to the E.T.T.A. whether or not also a member of a Directly Affiliated Club or of a club in membership of a Local League.
 - (5) Directly Affiliated School Club : a School Club which is accepted into direct affiliation with the E.T.T.A. whether or not also in membership of a league.
 - (6) division : a unit of a league which contains a number of teams.
 - (7) Local League : any organisation or association which runs a competition between teams from clubs in a particular locality. Except where specifically excluded Local League includes Youth League.
 - (8) Member : any person mentioned in Rule 5(a), or any official, player or other member of a body mentioned in Rule 5(a).
 - (9) Organisation in Good Standing : An organisation which has been given official recognition by the E.T.T.A. under Rule 5(b), being EITHER an organisation which is not a Table Tennis organisation, but under whose auspices Table Tennis is played, OR a Table Tennis organisation or competition which is not of a type mentioned in Rule 5(a).
 - (10) Registered Member : a member of the Association duly registered under the provisions of Rule 37 and the Registered Members Regulations in Appendix "A."

- (11) School Club : a club the membership of which is restricted to schoolchildren.
- (12) Schools League : a league consisting entirely of School Clubs.
- (13) Season : The period commencing the day after completion of an Annual General Meeting and ending on the day when the next Annual General Meeting is completed.
- (14) Youth Club : a club which is certified by a local Education Authority Youth Committee to be a youth club or accepted by the National Council as a youth club.
- (15) Youth League : a league the membership of which is restricted to persons under 21 years of age and consisting entirely of Youth Clubs or of Youth Clubs and School Clubs.
- (b) (1) Where the context so permits the masculine gender shall be taken to include the feminine.
- (2) Where the context so permits the singular shall include the plural and vice versa.

CONSTITUTION

- 5 (a) The Association shall consist of
 - (i) President, Vice-Presidents, Honorary Life Members and duly elected Officers.
 - (ii) County Associations.
 - (iii) Affiliated Local Leagues, Directly Affiliated Clubs and Directly Affiliated Individuals.
 - (iv) Affiliated Schools Leagues and Directly Affiliated School Clubs
- (b) Other organisations may be accepted into Good Standing at the discretion of the National Council.

AFFILIATION

- 6 (a) The normal unit of affiliation shall be the Local League. Any league playing under the Laws of Table Tennis as approved by the Association shall be eligible for affiliation.
- (b) Additionally any club, or any individual player (provided he has attained the age of 45 years at the time of application or was in direct affiliation prior to 1st July 1957), playing under the Laws of Table Tennis as approved by the Association shall be eligible for direct affiliation.
- 7 (a) Every applicant for affiliation to the Association shall complete the current affiliation form and shall sign it on behalf of himself or of the league or club for which application is being made.
- (b) (i) Such form shall then be submitted to the appropriate County Association (if any) which shall indicate whether the application is approved or not.
- (ii) If approval of the application be not given or refused by the County Association within 28 days it shall be deemed to be refused.
- (iii) If approval of the application be refused or deemed refused the applicant may apply to the National Council for the approval of the County Association to be dispensed with. If such an application be refused the applicant may appeal to the Board of Appeal.

- (iv) In the event of any application or appeal as mentioned in Rule 7(b) (iii) the County Association concerned shall provide a written statement of its reasons for not approving the application. If such statement is not provided the application or appeal shall forthwith be granted or allowed.
- (c) (i) Every application for affiliation approved by a County Association (if appropriate), or for which such approval shall have been dispensed with, shall be granted or refused by the Management Committee which shall have the power to refuse without giving reasons.
- (ii) An applicant may appeal to the National Council against refusal by the Management Committee. For the purpose of this rule refusal shall be deemed if the Management Committee has not accepted or refused within 28 days of the application being made or, if a County Association's consent be necessary, within 28 days of such consent being given or dispensed with.
- (d) The procedure laid down by Rules 7(a) to (c) shall, unless resolved otherwise by the National Council, apply only to a first application for affiliation; renewal of affiliation shall be effected by sending the appropriate form direct to the E.T.T.A. General Secretary, and payment of the appropriate Affiliation Fees in due course.

AFFILIATION FEES

- 8 A Local League shall pay affiliation fees on the basis of the number of teams it has in membership and the number of players required to make up a team in that league.
 - 9 (a) The annual Affiliation Fees shall be as follows :—
Local Leagues :
 - (i) 2/6d. per team place for each team in a league other than a Youth League (i.e. 5/- for each team playing in a 2-a-side division, 7/6d. for each team playing in a 3-a-side division and so on pro rata) except as provided in Rule 9(a) (iii).
 - (ii) 1/3d per team place for each team in a Youth League.
 - (iii) 1/3d per team place for each Youth Club team which plays in a Local League division membership of which division is restricted to persons under 21 years of age.
 - Not before season 1967/68 (iv) For each club not participating in the league competition a fee calculated as follows : The fee laid down by Rule 9(a) (i) multiplied by the lowest number of players required by the rules of that league to constitute a full team.
 - (v) Any Local League not affiliated to a County Association shall pay an additional fee of 3d per team place as provided in Rule 32(a) (vii).
- Calculation—The number of team-places in a league shall be calculated by adding together the number of team-places in each division of that league; the number of team-places in a division shall be calculated by multiplying the number of teams in the division by the lowest number of players required by the rules to constitute a full team.

- (b) Directly Affiliated Clubs :
 - (i) £1 10s. 0d. for each club affiliating directly, which is not Youth Club.
 - (ii) 10s. for each Youth Club affiliating directly.
 - (c) Directly Affiliated Individuals £1 10s. 0d.
 - (d) Schools Leagues and Directly Affiliated School Clubs shall be affiliated without fee.
 - (e) Other organisations accepted into Good Standing under Rule 5(b) may be required by the National Council to pay such fees as the National Council may determine.
- 10 All Affiliation Fees shall be paid to the General Secretary of the Association not later than 15th November each season.

UNPAID AFFILIATION FEES

- 11 No Local League from or in respect of which any Affiliation Fees are due but unpaid shall be entitled to participate in any election of Officers or Councillors, nor to exercise any votes at a General Meeting, nor shall a County Association be entitled to exercise any votes in respect of such Local League, nor shall any member of such Local League be entitled to attend any General Meeting or take any part in the business of the Association.

HANDBOOK

- 12 Copies of the Association's current Handbook when published shall be supplied free of charge to every County Association, Local League, Directly Affiliated Club, Directly Affiliated Individual and Registered Member.

PRESIDENT AND VICE-PRESIDENTS

- 13 (a) The Association shall have a President and not more than 25 Vice-Presidents who shall be elected by the Annual General Meeting.
- (b) The President or a Vice-President shall be elected for a term of three years, but shall be eligible for re-election at the end of such term.
- (c) Nominations for President and Vice-Presidents shall be submitted only by the National Council.
- (d) The President and Vice-Presidents shall hold office from the day following the A.G.M. at which they are elected.
- (e) The President shall have the right to attend all meetings of the Association including meetings of the National Council and of the Management Committee.

HONORARY LIFE VICE-PRESIDENT

- 14 (a) The Association may elect a Life Vice-President, but only past Presidents of the Association shall be eligible.
- (b) The distinction shall be conferred only at an Annual General Meeting.
- (c) Candidates shall be nominated only by the National Council.
- (d) The distinction shall carry with it the right to attend all General Meetings of the Association and the right to the Official Pass.

HONORARY LIFE MEMBERS

- 15 (a) The distinction of Honorary Life Member may be conferred for special or long service in connection with the game nationally.
- (b) The distinction shall be conferred only at an Annual General Meeting.
- (c) Candidates shall be nominated only by the National Council.
- (d) The distinction shall carry with it the right to attend all General Meetings of the Association and the right to the Official Pass.

OFFICERS

- 16 (a) The honorary Officers of the Association shall be Chairman, Deputy Chairman, General Secretary (if the post be not suspended in the manner mentioned in Rule 16(e)) and Treasurer.
- (b) All Officers shall retire annually at the end of the Annual General Meeting, but shall be eligible for re-election.
- (c) A casual vacancy in an office shall be filled in the manner set out in Rule 17 so far as applicable, the nomination forms being sent out not later than seven days after the vacancy occurs.
- (d) Notice of intention not to seek re-election to any Office should be sent to reach the General Secretary not later than January 31st in any year.
- (e) Should the National Council under the provisions of Rule 19 appoint a paid General Secretary, the office of honorary General Secretary shall be suspended whilst such appointment is in effect.

ELECTION OF OFFICERS

- 17 (a) A nomination paper shall be sent by the General Secretary to the Secretary of every County Association and of every Local League (except as mentioned in Rule 11) not later than 16th April.
- (b) Each County or Local League shall be entitled to nominate one person for each office to be filled.
- (c) To be valid a nomination paper must :
 - (i) be signed by the Secretary and by another responsible officer of such County Association or Local League, and
 - (ii) be received by the General Secretary of the Association (or such other person as may be appointed for the purpose by the Management Committee) not later than 14 days after the issue of the nomination papers.
- (d) No person will be effectively nominated unless he is named in at least two valid nomination papers.
- (e) Voting for the election of the Officers of the Association shall be by postal ballot (if there be more than one effective nomination for any office) which shall be conducted in such manner as the National Council may from time to time determine.
- (f) The vote of each County shall count as 1 unit, the vote of each Local League with 30 or less teams in membership 1 unit, 31—100 teams in membership 2 units and 101 or more teams in membership 3 units.
- (g) Every voting paper shall be signed by the Secretary and another responsible Officer of the organisation voting.

- (h) Scrutineers shall be appointed by the National Council to determine any questions as to the validity of nomination and voting papers, and ascertain the result of any postal vote held under the provisions of this rule.
- (i) The result of the election of Officers shall be circulated concurrently with the nomination papers for the election of National Councillors under Rule 21(a).

OFFICIALS

- 18 The National Council shall at its discretion have authority to elect additional honorary officials for up to one year and to invite such persons to attend meetings of the National Council, but, unless they already be members of the Council, without right to speak (unless invited to do so) and without vote.

PAID APPOINTMENTS

- 19 (a) The National Council shall have power to create and fill any paid appointment which in its opinion is necessary.
- (b) The National Council shall approve any contract necessary in connection with such paid appointment and shall authorise the Officers to sign it on behalf of the Association. The contract shall thereupon be binding upon the Association.

NATIONAL COUNCIL

- 20 (a) The Association shall, subject to the control of the Annual General Meeting, be governed by a National Council which shall consist of the Officers of the Association (as defined by Rule 16(a)) together with one person representing each County Association elected annually in the manner laid down by Rule 21.
- (b) No Councillor may represent more than one County.
- (c) Every Councillor shall retire annually at the end of the Annual General Meeting but shall be eligible for re-election.
- (d) In the event of a Council seat becoming vacant, it shall be filled by election in the manner laid down by Rule 21 so far as applicable.
- (e) The quorum necessary for the transaction of business by the Council shall be fifteen members with the right to vote.
- (f) All past Chairmen of the Association shall be entitled to attend meetings of the Council with the right to speak but not to vote.
- (g) Except as herein otherwise provided, every question at a meeting of the Council shall be determined by a majority of the votes of the members present and voting, every member having one vote, and in the case of an equality of votes the chairman of the meeting shall have a second or casting vote. The President and past Chairmen shall not be entitled to vote.
- (h) The Council may delegate any of its duties to the Management Committee.
- (i) Standing Orders for the Management Committees shall be subject to approval by the Council.
- (j) The Council may appoint sub-committees consisting of such person as it thinks fit, which shall, in the performance of their duties, conform to any regulations that may be imposed on them by the Council and shall report to the Management Committee.

- (k) The administration of the Rules and Regulations of the Association shall be vested in the Council who shall (subject to Rule 20 (h)) :
 - (i) Decide questions of laws and other matters relating to the game but cannot alter the Rules of the Association.
 - (ii) Decide matters relating to International and representative matches, teams, conferences, etc., as affecting the Association.
 - (iii) Sanction Open Tournaments, Invitation Tournaments or general Competitions.
 - (iv) Decide all questions under Rule 47.
- (l) The Council shall have the power to make regulations to cover international contacts, regulation dress and badges and such other matters not specifically dealt with in these Rules as the Council shall think fit. Such regulations shall be publicised as appendices to these Rules.
- (m) At the first meeting of the Council after the Annual General Meeting it shall agree its Standing Orders for the coming period of office.
- (n) The Council shall hold a meeting within fifteen days after the annual General Meeting, at which meeting Management Committee members shall be elected as provided by Rule 23.
- (o) The Council shall hold a minimum of three meetings every season.

ELECTION OF NATIONAL COUNCIL

- 21 (a) A nomination paper shall be sent by the General Secretary to the Secretary of every Local League which is affiliated to a County Association (except as mentioned in Rule 11) not later than 16th May.
- (b) Each Local League shall be entitled to nominate a person to be National Councillor for the County Association of which such Local League is in membership.
- (c) To be valid a nomination paper must :
 - (i) be signed by the Secretary and another responsible officer of such Local League and
 - (ii) be received by the General Secretary of the Association (or such other person as may be appointed for the purpose by the Management Committee) not later than 14 days after issue of the nomination papers.
- (d) No person will be effectively nominated unless he is named in at least two valid nomination papers. Exceptionally, where there is only one Local League in membership with the County Association, one valid nomination shall suffice.
- (e) In the event of there being no effective nomination from any County by the date provided by Rule 21(c) (ii), the E.T.T.A. General Secretary shall not later than 7th June inform the Secretary of such County Association, which shall then be entitled to nominate a person to be its Councillor for the following season, such nomination being effective if received by the E.T.T.A. General Secretary in writing not later than 13th June.
- (f) If there be more than one person effectively nominated to represent any County Association, there shall be a postal ballot of the Local Leagues in membership of that County Association carried out in such manner as shall be determined by the National Council.

- (g) The vote of each Local League having 30 or less teams in the League shall count as one unit, each Local League having 31 to 100 teams as two units, and each Local League having more than 100 teams three units.
- (h) Each Local League's voting paper shall be signed by the Secretary and by another responsible officer of such League.
- (i) Scrutineers shall be appointed by the National Council to determine any questions as to the validity of nomination and voting papers, and to ascertain the result of any postal vote held under the provisions of this Rule.
- (j) A list of the National Councillors elected shall be circulated not later than 17th June.

MANAGEMENT COMMITTEE

- 22 (a) There shall be a Management Committee to manage the affairs of the Association in accordance with the policy and directions of the National Council.
- (b) Such Committee shall consist of the Officers and four other National Council members elected by the National Council in the manner laid down by Rule 23.
- (c) Committee members (other than the Officers) shall retire on the election of their successors at the first Council meeting after the Annual General Meeting. Committee members shall be eligible for re-election.
- (d) Any casual vacancy occurring in the Committee shall be filled in the manner laid down by Rule 23 as far as applicable.
- (e) The quorum necessary for the transaction of business by the Committee shall be four, including at least one Officer.
- (f) All past Chairmen of the Association shall be entitled to attend meetings of the Committee with the right to speak but not to vote.
- (g) Except as herein otherwise provided, every question at a meeting of the Committee shall be determined by a majority of the votes of the members present and voting, every member having one vote, and in the case of an equality of votes the chairman of the meeting shall have a second or casting vote. The President and past Chairmen shall not be entitled to vote.
- (h) The Standing Orders for the Management Committee shall be as approved by the National Council under Rule 20(i).

ELECTION OF MANAGEMENT COMMITTEE

- 23 (a) The four members of the Management Committee other than the Officers shall be elected by secret ballot of the National Council.
- (b) The ballot shall be held at the first meeting of the National Council after the Annual General Meeting (hereinafter referred to as "the Election Meeting.")
- (c) A nomination paper shall be given to every member of the Council present.
- (d) Each member shall be entitled to nominate up to four persons.
- (e) No person will be effectively nominated unless he is named in at least two papers.
- (f) Each member of the National Council shall vote for four persons, no more, no less.

- (g) The four persons receiving the highest number of votes shall be declared elected. If an equality of votes results in there not being four persons with a clear majority over the other candidates, then those who have such clear majority shall be declared elected, and a fresh ballot shall be held for the remaining seat or seats, for which only candidates unsuccessful in the previous ballot shall be eligible.
- (h) Scrutineers shall be appointed by the Annual General Meeting to determine any question as to the validity of nomination and voting papers and ascertain the result of the ballot.

FINANCE

- 24 The financial year of the Association shall end on 31st May, and an audited statement of accounts up to and including this date shall be published annually.
- 25 The Auditors shall be elected by the Annual General Meeting and shall take office from the day following that meeting.
- 26 The funds of the Association shall be lodged at a bank, and all cheques, drafts, etc., drawn on the account shall be signed by the Treasurer and by either the Chairman or General Secretary.
- 27 If at any time the National Council shall procure the registration under the Companies Act, 1948, of a company limited by guarantee having amongst its objects, objects similar to those of the Association, the National Council shall have the power to transfer and pay over to such company without consideration the whole of the property and assets of the Association (after payment of or provision for the liabilities of the Association) and after such transfer and payment over to declare by resolution that the Association is dissolved. Any such transfer and payment shall be valid and binding upon all parties interested and such declaration shall be effective.
- 28 If upon the winding up or dissolution of the Association there remains, after the satisfaction of all its debts and liabilities, any property whatsoever, the same shall not be paid to or distributed among the members of the Association, but shall be given or transferred to some other institution or institutions having objects similar to the objects of the Association and if effect cannot be given to such provision then to some other purposes approved by the Commissioners of Customs and Excise.

ANNUAL GENERAL MEETING

- 29 (a) The Annual General Meeting of the Association shall be held in the last week in June or the first week in July.
- (b) Notice specifying the place, the date and hour, together with the Agenda, shall be given to the Secretary of every County Association, Local League and Directly Affiliated Club and to every Directly Affiliated Individual not later than 1st June.
- (c) Attendance at the A.G.M. shall be open to all Members (except as mentioned in Rule 11).
- (d) Each County Association, and each Local League which has exercised the option under Rule 30 (a), shall be entitled to appoint an Accredited Representative who shall hold the official Voting Card issued by the E.T.T.A. signed by the Secretary of his County Association or Local League.

- (e) The Agenda for the Annual General Meeting shall include the following items :

- (i) To adopt Standing Orders for the meeting.
 - (ii) To read the minutes of the previous Annual General Meeting.
 - (iii) To consider any matters arising therefrom.
 - (iv) To read the minutes of any Special General Meeting held since the previous Annual General Meeting.
 - (v) To consider any matters arising from (iv).
 - (vi) To receive and consider the Annual Report of the National Council.
 - (vii) To receive and consider the Report of the Treasurer, the Report of the Auditors and the Statement of Accounts made up to May 31st or a subsequent date.
 - (viii) To consider and determine any alterations to Rules.
 - (ix) To consider any other Motions.
 - (x) To elect the President and Vice-Presidents if appropriate.
 - (xi) To elect Honorary Life Members of the Association.
 - (xii) To elect Scrutineers for the next Management Committee election.
 - (xiii) To elect Auditors for the ensuing year.
 - (xiv) To receive the Report of the Election of Officers.
 - (xv) To receive the Report of the Election of National Councillors.
 - (xvi) To consider any other competent business.
- (f) Before transacting any business the A.G.M. shall adopt Standing Orders which shall govern procedure at the meeting.
- (g) Motions affecting the constitution or the Rules of the Association or the Laws of Table Tennis as approved by the Association (i) may be proposed only by the National Council or by a County Association or a Local League and (ii) may be subject to Block Voting as provided in Rule 29(i).
- (h) On any motion the chairman shall have the power to test the meeting's feelings by a show of hands of Accredited Representatives. After declaring the hands shown for and against the motion the chairman shall declare the motion carried or lost, except as provided in Rule 29(i).
- (i) On a motion as specified in Rule 29(g) the chairman shall accept a demand for a Block Vote from any Accredited Representative, or may himself decide to proceed to a Block Vote. In the absence of a demand for a Block Vote, if the chairman is satisfied that the show of hands indicates a clear decision, he may dispense with a Block Vote and declare the decision on the basis of the hands shown.
- (j) Block Vote : In Block Voting each County Association's Accredited Representative shall exercise the votes of every Local League in his County except any Local League which has exercised the Option given by Rule 30(a), or any Local League which has exercised the Option given by Rule 30(a) shall exercise the votes of his Local League. Each Local League shall be entitled to one vote for each team in membership.
- (k) A majority in excess of opposition of one-third of the votes cast shall be necessary to carry any resolution in respect of the Rules of the Association and the Laws of Table Tennis. Other resolutions

shall be decided by simple majority, and, in the event of a tie, except on financial questions, the meeting shall proceed to the next business. In the matter of finance the chairman shall have a casting vote.

VOTING BY LOCAL LEAGUES AT GENERAL MEETINGS

- 30 (a) Any Local League wishing to exercise its own votes at a General Meeting shall give notice in writing to the General Secretary of the Association of its desire so to do not later than 14 days before the date of the General Meeting, such notice being signed by the Secretary and by another responsible officer of the Local League. The General Secretary shall issue an official Voting Card to the Secretary of such Local League not later than seven days before the date of the meeting.
- (b) The votes of every Local League which does not exercise the option granted by Rule 30(a) shall be exercised by the Accredited Representative of the County Association to which such Local League belongs.

SPECIAL GENERAL MEETING

- 31 (a) A Special General Meeting of the Association shall be convened on a resolution of the National Council, or within one month of receipt by the General Secretary of a request signed by the authorised representatives of at least one third of the Local Leagues.
- (b) Rule 29 respecting circulation of notices and procedure shall apply as for the Annual General Meeting so far as applicable, at least 28 days' notice being given.

COUNTY ADMINISTRATION

- 32 (a) (i) Where a majority of affiliated local leagues in any County agree, a body shall be set up for the purpose of administration in the County.
- (ii) The administrative area of a County Association shall be defined primarily by the geographical boundaries of the County in force for the time being.
- (iii) There shall be no County of London, but for the purpose of these Rules the Greater London area shall be divided as follows:
The boroughs of Bexley, Bromley, Greenwich and Lewisham shall be part of Kent.
The boroughs of Barking, Havering, Newham, Redbridge and Waltham Forest shall be part of Essex.
The boroughs of Croydon, Kingston, Lambeth, Merton, Richmond-on-Thames, Southwark, Sutton and Wandsworth shall be part of Surrey.
The boroughs of Barnet, Brent, Camden, Chelsea, City, Ealing, Enfield, Hackney, Hammersmith, Haringay, Harrow, Hillingdon, Hounslow, Islington, Kensington, Tower Hamlets and Westminster shall constitute the County of Middlesex.
- (iv) A Local League shall affiliate to the County Association in whose geographical area the majority of its member clubs are situated, except as provided in (v) or (vi) below.

- (v) A Local League operating near or across the boundaries of two or more Counties may select to which of the County Associations concerned it shall affiliate, subject to the approval of those County Associations and of the National Council.

- (vi) A Local League continuously affiliated to a County Association other than that defined by Rule 32(a) (iv) since before 18th January, 1964, shall have the right to continue to affiliate to that Association.

- (vii) In any case where the National Council may decide that a Local League shall not be obliged to affiliate to a County Association, either (1) because no County Association exists in the County concerned or (2) because membership of the Local League concerned is spread over more than one County, an additional fee of 3d per team place for each team in membership with the said Local League shall be paid to the E.T.T.A. Money so received in case (1) shall be passed to the appropriate County Association if one be formed during the year to which payment relates, but shall otherwise become ordinary E.T.T.A. income. Money so received in case (2) shall be divided in such a manner as the National Council may decide among the County Associations in whose areas the Local League concerned operates.

- (b) (i) Membership of or affiliation to such County Association shall be compulsory for all Local Leagues, Directly Affiliated Clubs, Directly Affiliated Individuals, Schools Leagues and Directly Affiliated School Clubs in the County, except as provided under Rule 32(a).

- (ii) All organisations in the County in Good Standing with the E.T.T.A. shall be accepted into Good Standing by the County Association.

- (c) The Constitution and Regulations of each County Association and any amendments thereto shall not be valid unless approved by the National Council.

- (d) A County Association shall have power to organise Open and Invitation Tournaments (subject to the sanction of the National Council) Closed Tournaments, County Leagues, County Championships, Inter-League matches and Inter-County Championships. They shall also have power, in conjunction with other County Associations, to run representative matches, leagues, etc.

- (e) A County Association shall have complete autonomy in organising and administering the game in the county but shall have no power to alter the laws of the game or the rules and regulations of the Association or to over-ride the decisions of the National Council.

- (f) A County Association shall have power to suspend Local Leagues, Clubs, players or officials and such suspensions to be compulsorily carried out by all bodies in the county, subject to a right of appeal to the National Council. The suspension to be made national if so decided by the National Council.

- (g) A County Association shall be entitled to receive each season from the E.T.T.A.:-

- (i) a rebate of 20% in respect of Affiliation Fees paid to the E.T.T.A. by 31st March by Local Leagues, Directly Affiliated

- Clubs and Directly Affiliated Individuals in membership with such County Association and
- (ii) a rebate of 20% of the competitors' fees paid to the E.T.T.A. in respect of Tournaments played within the area of such County Association and
- (iii) a rebate of 20% of the fees paid by 31st March by all Registered Members whose application forms were countersigned on behalf of such County Association.
- Not before season 1967/68

COMPULSORY RULES

- 33 Every County Association shall include in its Rules the following :—
- (i) The County's representative on the National Council shall, if not otherwise a member, be ex-officio a member of the County Committee.
- (ii) A Local League shall pay affiliation fees on the basis of the number of teams it has in membership and the number of players required to make up a team in that league.
- (iii) Schools Leagues and School Clubs may affiliate to the County Association without fee.

GENERAL AND DISCIPLINARY

- 34 No affiliated player or club may take part in competition with any player or club, or in exhibition at any club, or under any auspices, not registered or affiliated to the English Table Tennis Association, without the Sanction of the County Secretary concerned.
- 35 No affiliated player may permit a cinematographic record of himself or herself to be taken in connection with Table Tennis for public exhibition unless sanction has first been obtained from the General Secretary of the Association.
- 36 No affiliated player, organiser or official may take part in a televised event in connection with table tennis unless sanction has first been obtained from the General Secretary of the Association or the event is one authorised by the Association.
- 37 Registered Members :
- (a) The National Council shall have power to make regulations governing the conduct of Registered Members which regulations shall be included in Appendix 'A' to these Rules.
- (b) No payment, other than expenses, shall be made to or received by any Member for playing, coaching, umpiring, writing, filming, broadcasting, televising, or for exhibitions or in relations to equipment, unless he has been duly registered as a Registered Member or has received specific permission from the National Council of the English Table Tennis Association to receive it. Application of this Rule may be excused at the discretion of the National Council in respect of writing, filming, broadcasting and televising.
- 38 No affiliated players shall be paid or received any remuneration other than expenses (return fare, hotel accommodation and meals) or reward (other than prizes as provided for in the Association's regulations dealing with the Registered Member) for playing in any competitive table tennis event. A competitive table tennis event is one in which a

player is playing for his Club, League, County or Country against another Club, League, County or Country, or in an Open, Closed, Invitation, or other Tournament, Trial or representative matches organised by Club, Leagues, Counties or the National Association shall rank as competitive play.

- 39 (a) No affiliated player may enter into a contract in return for capitalising his skill at table tennis without the sanction of the National Council.
- (b) No affiliated player may enter into a contract providing for his exclusive use of a certain materials or exclusive play on certain premises controlled by a firm, in any circumstances.
- 40 Betting in any shape or form on players or matches is strictly prohibited.
- 41 A person gainfully connected with table tennis may occupy an administrative office, or serve on an administrative committee of the Association only provided that he is prepared to withdraw from any meeting or abstain from voting on any issue, on request formally passed by a majority of the meeting he is attending.
- 42 In all tournaments and matches sanctioned by the National Council, players are prohibited from wearing white or light coloured clothes that might, in the opinion of the duly appointed referee, tend to unsight an opponent.
- Recommendation adopted at A.G.M. April, 1952 : All competitors are strongly recommended wear a sports shirt or other top of single colour (except for badge, of reasonable size), trousers, skirts, or shorts of single colour and rubber shoes. All counties, leagues, local associations and clubs are requested to use their best endeavours to secure compliance with this recommendation. Players representing the Association in an International or other representative match must wear the regulation dress as instructed by the National Council.
- 43 Any player having accepted selection by the Association to attend any international match or other event and without good and sufficient cause either refusing to comply with the arrangements of the National Council or any of its sub-committees for playing the match or event, or failing to attend the same, may be adjudged by the National Council to have been guilty of misconduct, and any Member adjudged to have encouraged such player to commit a breach of instruction or rule shall be deemed guilty of a like offence.
- 44 No Member of affiliated organisation shall play Table Tennis with or against or take part in any Table Tennis function in conjunction with any suspended organisation or Member.
- 45 (a) In the event of any act, statement, writing, conduct or matter not provided for elsewhere, which, in the opinion of the National Council is likely to bring the game of Table Tennis into disrepute, the National Council may request the Member responsible for such act, statement, writing, conduct or matter (hereinafter called "the offender") to give a written undertaking not to repeat such act, statement, writing, conduct or matter, nor to do or commit any similar act, statement, writing, conduct or matter. In default

of such undertaking being given within seven days from the sending of a written request to the offender, or if such undertaking is given and there is any breach thereof, then such default or breach shall be misconduct.

- (b) The National Council shall have the power to resolve that any such act, statement, writing, conduct or matter as is mentioned in Rule 45 (a) is in itself misconduct and shall be dealt with as such.
- 46 Failure of any Member without good and sufficient cause to attend the Hearing of any allegation or appeal after having been requested with reasonable notice so to do, or failure without good and sufficient cause to answer any question put to him in connection with such allegation or appeal shall be deemed misconduct.
- 47 Upon any breach of these Rules or of the Regulations made thereunder or of any misconduct as defined in these Rules being proved to the satisfaction of the National Council, the Council shall have power to order the Member or organisation guilty of such breach or misconduct (the offender).
- (i) To be suspended either indefinitely or for a stated period.
 - (ii) To be fined (either in addition to suspension or not)
 - (iii) To be censured.
 - (iv) To be dealt with in such other manner as the National Council may think fit.

There shall be no appeal against such decision.

- 48 Any Member or organisation charged with any breach or misconduct shall be furnished with details in writing of such charge and shall have the right to a personal Hearing or to make written representations.
- 49 The procedure for dealing with any allegation of breach of Rule or Regulation or of misconduct shall be determined by the National Council and shall be included in Appendix 'E' to these Rules.

APPEALS

- 50 Any individual or club aggrieved by a decision or action of a Local League, or a Committee or Officer of such League, may appeal against any such decision or action to the County Association to which such Local League is affiliated, or if there be no such County Association, to the National Council of the E.T.T.A., and the decision of the body to which the appeal is made shall be final and binding on all parties.
- 51 (a) Any individual, club or Local League aggrieved by a decision or action of a County Association, or a Committee or Officer of such Association, or of the E.T.T.A., or the National Council, or a Committee or Officer of the E.T.T.A., (except a decision under Rule 47) may appeal against any such decision or action to the Board of Appeal of the E.T.T.A.
- (b) The Board of Appeal shall consist of eight persons appointed by the National Council but not being members of the Council.
- (c) The procedure for matters being dealt with by the Board of Appeal shall be determined by the Board and a copy of the Regulations governing such procedure shall be supplied to every organisation or Member against whom a breach of Rule or Regulation or misconduct is alleged, or any organisation or Member making any appeal under these Rules.

- (d) Each appeal shall be determined by three members of the Board of Appeal selected by the Management Committee, who shall also designate one of the three as Chairman.
- (e) The Board shall decide the appeal, except that, where the appeal would be upheld on a technicality only, or due to a procedural irregularity by the body appealed against, then the Board may remit the matter to be dealt with afresh by the body appealed against, with a direction regarding the technicality or procedural irregularity.
- (f) Where the appeal is against disciplinary action the Board shall have the power to vary the punishment imposed.
- (g) The decision of the Board shall be final and binding on all parties.
- (h) The decision of the Board shall be published forthwith, and a written minute of the decision shall be sent to the appellant and all other parties to the appeal.

- 52 Any such appeal (as provided for by Rules 50 and 51) shall be made in writing to the General Secretary of the appropriate body within 21 days of the decision or action appealed against, and shall be accompanied by a fee of 10/- in the case of an individual or £2 in the case of an organisation which shall be returned if the adjudicating body consider the making of an appeal to have been justified (whatever the result). Either party to the appeal shall be entitled to be heard by the adjudicating body, both in person, and, if so desired, additionally by a representative who shall have been nominated in writing when the appeal was lodged.

- 53 Whilst any appeal is pending the decision against which the appeal has been made shall not have effect.

- 54 The Rules of the Association being sufficient to enable the National Council, as the governing body of the game of Table Tennis in England, or the Board of Appeal to deal with all cases of dispute, legal proceedings shall be taken only as a last resort, after the full procedure laid down by these Rules and any Regulations made thereunder shall have been followed through.

- 55 The Association shall be entitled to publish in the public Press, or in any other manner it shall think fit, reports of its proceedings, acts and resolutions, whether the same shall or shall not reflect upon the character or conduct of any league, club or Member, and every such league, club and Member shall be deemed to have assented to such publication.

OPEN AND INVITATION TOURNAMENTS

- 56 (a) The National Council shall have power to make regulations defining categories of tournaments, and governing the conduct and organisation of such tournaments as may be specified. Such regulations shall be included in Appendix 'B' to these Rules.
- (b) Every tournament shall come within one of the categories defined by the National Council in Appendix 'B', and the National Council shall have power to decide in which category any particular tournament shall be placed.

- (c) No Open or Invitation Tournament shall be held without the sanction of the National Council. Application for running an Open or Invitation Tournament shall be submitted to the appropriate County Association (if any) who shall forward the application to the National Council with their recommendations.

ENGLISH OPEN CHAMPIONSHIPS

57 The English Open Championships may be held once every year and when so held :—

- (a) The date and venue shall be fixed and notice of same circulated as in Rule 29(b) not later than December 31st each year.
- (b) Twelve Championships shall be held as follows : Men's Singles, Men's Doubles, Women's Singles, Women's Doubles, Mixed Doubles, Junior Singles (Boys), Junior Singles (Girls), Junior Doubles (Boys), Junior Doubles (Girls), Junior Mixed Doubles and Men's and Women's Veterans' Singles, and in addition a Men's and Women's Consolation Singles event for competitors eliminated in the first two played rounds of the Singles Championships. A walkover but not a bye shall rank as a played round. It shall be in the power of the National Council to decide, in any year, to hold Junior Championships events separately from the Senior Championships.
- (c) All matches in the Championships shall be the best of five games, with the exception of the Junior Singles (Boys), Junior Singles (Girls), Junior Doubles (Boys), Junior Doubles (Girls), Junior Mixed Doubles, Veterans' and Consolation events, which shall be best of three games.
- (d) Such of the regulations in Part II of Appendix 'B' as are specified in Part IV of Appendix 'B' shall apply to the English Open Championships.

ENGLISH CLOSED CHAMPIONSHIPS

58 The English Closed Championships may be held once every year and when so held :

- (a) Five Championships shall be held as follows : Men's Singles, Men's Doubles, Women's Singles, Women's Doubles and Mixed Doubles. In addition a Men's and Women's Consolation Singles shall be held for competitors eliminated in the first two played rounds of the Singles Championships. A walkover but not a bye shall rank as a played round.
- (b) All matches in the Championships shall be best of five games with the exception of the Men's and Women's Consolation Singles event, which shall be the best of three games.
- (c) Such of the regulations in Part II of Appendix 'B' as are specified in Part V of Appendix 'B' shall apply to the English Closed Championships.

ALTERATION OF RULES

- 59 (a) These Rules and the Laws of the Game, as approved by the Association, may be changed (whether by addition, alteration or deletion) only by decision of an Annual General Meeting or of a Special General Meeting convened for the purpose.

- (b) Proposals for such changes to be considered by the next Annual General Meeting shall be submitted in writing to reach the General Secretary not later than the last day in February. All proposals so received shall be circulated to all County Associations and Local Leagues during March and amendments or alternative proposals dealing with the same substance shall be accepted for consideration by the Annual General Meeting if submitted in writing and received by the General Secretary not later than the last day in April.
- (c) Proposals for such changes to be considered by a Special General Meeting shall be submitted to the General Secretary in writing together with the demand for that Special General Meeting.
- (d) Unless resolved otherwise by the meeting, any alteration to a Rule dealing with Affiliation Fees or other revenue, or with the rebate paid to County Associations shall take effect on the first day of the season next but one after that in which was held the meeting at which it was passed.
- (e) Except as provided by Rule 59(d), any alteration to a Rule shall take effect on the first day of the season following that in which was held the meeting at which it was passed, unless resolved otherwise by such meeting.

MATTERS NOT COVERED BY RULES

- 60 In the event of any question or matter arising which is not provided for in the Rules, such question or matter shall be dealt with by the National Council whose decision shall be final.
- 61 (a) Any communication to be sent by the Association to any person or organisation shall be properly sent if addressed to such person or to the General Secretary of such organisation at his last known address.
- (b) A County Association, Local League or club shall on demand supply to the General Secretary or other Officer of the Association the last known address of any Member who is a member of such County Association, Local League or club.

General Secretary: for the purpose of the above rules, all matters to be decided by the General Secretary should be addressed to the Hon. Assistant Secretary who will confer with an Officer of the Association before arriving at any decision required under the rules.

CLUB BADGES

- Attractive Cloth Badges, made to your own design, in any quantity
- Suitable for Blazers, Sweaters, etc.
- LOW PRICES AND QUICK DELIVERY
- Free help offered in designing your badge

Please write to:

S.A. CORY & CO. 35b Tooting Bec Gardens, London S.W.16

Page No.
36

AMENDMENTS REGULATIONS

- 36 In second line, for "Under Rule 36 (a)" substitute "Under Rule 37 (a)"
In Reg. I (a) delete "36 (a)" and insert "37 (b)"
In Reg. I (a) second line, for "affiliated member" substitute "Member"
In Reg. I (a) fourth line, after "registered" insert "as a Registered Member"
In Reg. I (a) sixth line, for "regulation" substitute "Rule"
In Reg. I (b) sixth line, for "of" substitute "and"
In Reg. I (f) for "Rule (39)" substitute "(Rule 40)"
38 In Reg. 4 delete the heading "Registered Members" and insert "Exhibition Players"
40 In Part I, Definition 2, third line, insert "and 5 (a)" between "Regulations" and "15 (f)"
42 In Reg. 8(c) insert "General" before "Secretary" in two places.
44 In Reg. 15(f) delete "space" insert "area." In line 2 delete "39 feet" insert "46 feet," delete "19½ feet" insert "23 feet"
In Reg. 16 delete "Open"
In Reg. 17 delete "Open"
45 at the end of Part II insert new Regulation 20 as follows:
No gambling is permitted, other than participation in lotteries conducted by permission of the Organising Committee. Any affiliated member taking part in gambling at a Tournament sanctioned by the E.T.T.A. is liable to immediate disqualification from the Tournament and eviction from the premises, and the matter reported to the E.T.T.A.
45 after Part III insert as follows:
Part IV
REGULATIONS FOR ENGLISH OPEN CHAMPIONSHIPS
Regulations 4 (b), 5 (a), 6, 7, 8 (a), 9, 8 (a), 11, 8 (a), 12, and 10 of Part II of this Appendix shall apply.
Part V
REGULATIONS FOR ENGLISH CLOSED CHAMPIONSHIPS
Regulations 4 (b), 5 (a), 8 (a), 8 (a) 9, 8 (a) 12, and 10 of Part II of this Appendix shall apply.
delete "Part IV" and insert "Part VI"
in second line from bottom, for "37 and 41" substitute "38 and 42"
46 in second and thirty-second lines, for "Under Rule 19(k)" substitute "Under Rule 20 (1)"
47 at the bottom of the page insert Appendix "E" as follows:

APPENDIX "E"

Regulations governing the procedure for dealing with allegations of breach of Rule or Regulation or of misconduct.

- 1 In the event of any breach of Rule or Regulation or of any misconduct being alleged against any Member or organisation, notice shall be given to such Member or organisation in accordance with Rule 48.

- 2 Not later than 14 days after the posting of such notice the Member or organisation so charged may send to the General Secretary of the Association an answer thereto, and /or a written application for a hearing in accordance with Rule 48.
3 The powers and duties of the National Council shall be exercised by a standing sub-committee called the Disciplinary Committee, consisting of 5 persons appointed by the Council at its first meeting after the Annual General Meeting to serve until their successors are appointed. Any member having an interest in the matter under consideration may be required to withdraw. The decisions of the Disciplinary Committee shall be published forthwith in the name of the Council.
4 In default of an application for a Hearing within the prescribed time, the matter shall be adjudicated taking into consideration such written representations or other evidence as may be thought fit.
5 Upon receipt of an application for a Hearing, the Member or organisation charged shall be given at least 14 days' notice of the date, place and time of the Hearing.
6 Where the allegation is against an organisation, any communication shall be addressed to the General Secretary of such organisation or other the person officially designated by such organisation to receive on its behalf official communications from the E.T.T.A., who shall also attend any Hearing on behalf of the organisation, unless some other person in place of the General Secretary be nominated in writing by the organisation.
7 Failure of any person involved to attend the Hearing, or to answer any question, or to produce any necessary papers, shall not prevent the Committee from proceeding to a decision.
8 Any Member charged, or the representative (designated by Regulation 6) of any organisation charged, may be accompanied at a Hearing by one other person of his choice, who shall not be a witness, and shall not (unless the person charged is under the age of 21 years) have the right to speak, but shall be entitled to make such record of the proceedings as he may think fit.
9 The Member or organisation charged shall have the right to give and call evidence in rebuttal of the charge and shall have the right to cross-examine any witnesses who give evidence in support of the charge.
10 On the completion of the evidence the Hearing shall be closed and the decision shall subsequently be communicated in writing by the General Secretary of the Association to the Member or organisation charged and any other Member or organisation concerned, and such decision shall be deemed to be a decision of the Association and binding on all Members and affiliated bodies.

TABLE TENNIS FUND

The leading Manufacturers' and Suppliers of Table Tennis Equipment in England have generously agreed to make an annual contribution to the finances of the E.T.T.A. in order to assist in the development and progress of the game in England.

The contribution will be calculated at a rate of 1d. per £ on all their sales of Table Tennis equipment in England during each year.

Accordingly, all members are asked to note the names of members of the scheme, and to support these particular firms when making future purchases of Table Tennis equipment and so at the same time assist the finances of the E.T.T.A.

Members of the scheme—(Details received at date of going to press)

ABBEY CORINTHIAN GAMES CO.
38/40 Upper Clapton Road, London, E.5.
Sets and accessories.

G. R. ADAMS (SPORTS MFRS) LTD.
39/41 Union Street, London, S.E.1.
Tables and Tops, Bats, Balls.

THE ATLAS COMPANY (O. E. Lewis, Ltd., Proprietors)
Atlas Works, 65a, Pearl Road, Walthamstow, London, E.17.
Tables and all Equipment.

E. B. BALMFORTH LIMITED.
2/4 Meanwood Road, Leeds, 7.
Tacky Leather Grips.

BRIDPORT-GUNDRY LIMITED.
Bridport, Dorset.
Nets.

AVON RUBBER COMPANY LIMITED
Melksham, Wiltshire.
Pimpled Sheeting.

CASTLE ENGINEERING PRODUCTS.
Trojan Works, West Ham Lane, Stratford, London, E.15.
"Spring Tauts" Spring Tension Nets & Posts. "Maryland" & "Club"
Nets. Electric Lighting Shades.

DUNLOP SPORTS COMPANY LIMITED.
Allington House, 136/142 Victoria Street, London.
Bats, Balls, Net & Posts, Bat Headcovers, Tables.

DUNLOP FOOTWEAR LIMITED.
Rice House, Walton, Liverpool 9.
Footwear.

THE EN-TOUT-CAS-COMPANY LIMITED.
Syston, Leicester.
Portable—Non-Slip—Floor Surfaces, Jointing Mechanism—For making
tables handleable by one person, Score Boards and Mechanisms.

GRAYS OF CAMBRIDGE LIMITED.
Playfair Works, Benson Street, Cambridge.
Tables, Bats, Bat Grips, Bat Covers, Posts and Nets.

HALEX (a Bakelite Xylonite Company).
Highams Park London, E.4.
Balls.

S. W. HANCOCK LIMITED.
119 The Chase, Clapham, London, S.W.4.
Bats and Accessories.

G. J. HAYTER & COMPANY LIMITED.
"The Victory Works," 31 Palmerston Road, Boscombe, Bournemouth,
Hants.
Bats, Nets, and Tables.

HILLCREST ENGINEERING LIMITED.
72/84 Great Barr Street, Birmingham 9.
Clamps.

LOUIS HOFFMAN (CLOTHING) LIMITED.
180 Brick Lane, London, E.1.
Clothing and Bats.

HUMPHREYS BROS. LIMITED.
Umbro Works, Wilmslow, Cheshire.
Shirts.

JOHN JAKES & SON LIMITED.
Whiteheather Works, Whitehorse Road, Thornton Heath, Surrey.
Tables, Bats, Balls, Nets, Posts and Bat Covers.

KAY (SPORTS & GAMES) LIMITED.
Carlisle Road, London, N.W.9.
"Johnny Leach" Tables.

WILLIAM LINDOP LIMITED.
4 Little Lever Street, Manchester, 1.
144/146 Kings Cross Road, London, W.C.1.
14 Brunswick Square, Bristol, 2.
Tables, Bats, Sets.

MITRE SPORTS.
86 Fitzwilliam Street, Huddersfield.
Sole Agents in G.B. of "Stiga" Table Tennis Equipment.

FRED PERRY SPORTSWEAR LIMITED.
Bridport Road, Edmonton, London, N.18.
Victor Barna range of Fred Perry Table Tennis clothes for ladies and men

RUCANOR LIMITED.
26 Gloucester Square, Hyde Park, London W.2.
Balls.

SAMS BROTHERS LIMITED.
Conduit Lane, Hoddesdon, Herts.
Tables, Bats, Nets, Posts and Balls.

SLAZENGERS LIMITED.
Challenge House, Mitcham Road, Croydon, Surrey.
Bats and Bat Headcovers.

JOHN SMALL.
25 Ashgrove, Bradford, 7, Yorkshire.
Bats.

A. G. SPALDING & BROS. LIMITED.
Doagh Road, Newtownabbey, Co. Antrim, N. Ireland.
Bats and Tables.

TA-TEN PRODUCTS.
50 Elmdale Road, Bedminster, Bristol, 3.
Bats, Balls, Nets, Posts and Covers.

JOHN WISDEN & COMPANY LIMITED.
Penshurst, Tonbridge, Kent.
All equipment supplied except clothing.

THE SPORTS AND GAMES SERIES
RULES of all Games

Handy vest pocket size editions of Rules of the following games, price 6d. are available from your local sports dealer or any branch of W. H. Smith & Son Ltd. Table Tennis Rules can be obtained from the E.T.T.A.

Official All England Netball Rules 2/6 each

Association Football	Cricket	Rackets and Squash
Auction Bridge	Crown Green Bowls	Rugby (League)
Badminton	Darts	Rugby (Union)
Bagatelle	Dominoes	Skittles
Baseball	Draughts	Solo Whist
Beziqne	Hockey	Stoolball
Boxing	Lawn Tennis	Table Tennis
Chess	Poker	Volleyball
Cribbage	Quitting	Whist

TRADE ENQUIRIES INVITED TO

SPORTS & GAMES PUBLICATIONS LTD.

10 Park Avenue West - Ewell - Surrey

The **WINNERS**
deserve the best...



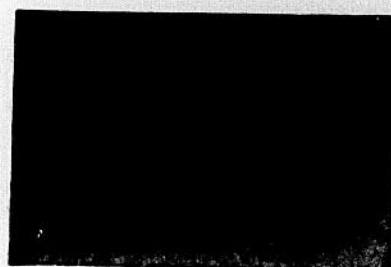
In other words awards from Colborne Trophies Ltd. We hold enormous stocks of beautifully finished cups, plaques, medals, and trophies at the keenest prices obtainable—ask for an appro range which will be sent free of all obligation.

We can save you pounds.

COLBORNE
TROPHIES LIMITED
 TROWBRIDGE WILTSHIRE

also at 32/34 VITTORIA STREET, BIRMINGHAM 1.

SUPERB TABLES and TROPHIES



"BROMFIELD" CHAMPIONSHIP TABLES
 Used in 50% of all International Matches in England during 1954/58

Two Models—
 ★ Standard £51
 ★ Service £44
 Write for lists

WONDERFUL TROPHIES AND AWARDS
 CUPS — PLAQUES — TANKARDS
 MEDALLION TROPHIES — MEDALS
 ALSO OUR FAMOUS "GOLDEN ENDEAVOUR" RANGE
 Illustrated Catalogue on request

Bromfield (Sports) Ltd.

BROMFIELD HOUSE
 27 BUCKINGHAM ROAD
 SHOREHAM-BY-SEA
 SUSSEX, ENGLAND
 Telephone
 Shoreham-by-Sea 4355/6



CLUB
 DISCOUNTS
 OFFERED

BATS CAN BE TRIED
 ON OUR TABLE
 WITHOUT OBLIGATION

Waterhouse & Conning
 SPORTS OUTFITTERS

8 PORTSMOUTH ROAD, WOOLSTON
 Phone: SOUTHAMPTON 47595

"Jewel" indoor/Outdoor T.T. Slate Table

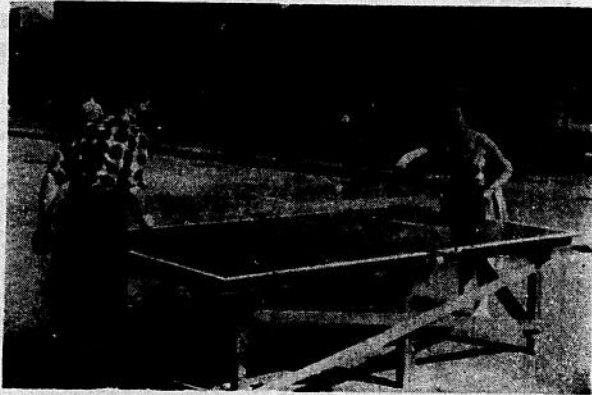
SAID THE SLATETOP TO THE WOODTOP—

ANYTHING YOU CAN DO I CAN DO BETTER

- e.g.* (1) I have 2 Surfaces, the finest known for play ; you have only one.
(2) I am geometrically true always on both surfaces in all conditions indoor and for outdoor.
(3) If I come by a blemish I can be repaired easily.
(4) To the discriminating—The bounce of the ball on each of my surfaces is not affected by the flooring or ground on which my base stands.
(5) I am recommended by the T.T. Association as suitable for expert play, etc., etc.

WRITE AND ASK WHERE I CAN BE SEEN

For
Championships
Club Room
Education (at
Day, Boarding
and Special
Schools)
Garden
Public Parks
Playing Fields
Childrens
Playgrounds,
etc., etc.



31 years in service and still in use

To renew old Table, strengthen legs, cut $\frac{1}{2}$ " from each and place 'Slatetop' on top of old Wood playing surface.

TABLE COMPLETE £61 SLATE TOPS £40/10/0
(sold separately)

Price includes delivery in Great Britain or to Port of Embarkation

SOLE MAKER AND DISTRIBUTOR

Buttar 46 Redford Street, Glasgow E.3.

WEMBLEY

*"The Sports and Entertainment
Centre of the World"*

EMPIRE STADIUM

100,000 Capacity

Home of Big Soccer (Cup Finals, Internationals etc.)

Rugby League — Gaelic Games — Women's Hockey

Speedway Racing — Greyhound Racing (Every Monday and
Friday, 7-45 p.m.)

EMPIRE POOL

8,000 Indoor Arena

Regularly Stages—

Ice Shows — Boxing — Professional Tennis — Ice Hockey

Horse Shows — Basketball — Badminton — Ice Skating

Concerts and Conferences

STADIUM BOWL AND STARLIGHT RESTAURANT

Britain's Luxury Tenpin Bowling Centre — 24 Lanes

Open Seven Days a Week — Restaurant (not open Sunday)

Seats 100 diners — Cocktail Bar

BOWL—Wembley 8560 RESTAURANT—Wembley 8580

Please ring WEMBLEY 1234 for any information regarding
forthcoming events at the EMPIRE STADIUM and EMPIRE
POOL